



Masonry & Alternative Masonry *Collection*

LOYALTY  
*CREATIVITY*  
EXPERTISE  
*GROWTH*  
INNOVATION

---

Timeless, elegant and refined, Rinox bricks and stones are distinctive due to their natural colors and quality design. In choosing masonry products, you will increase the attractiveness of your property.





OXFORD  
WHISTLER

# Table of contents

<b>TONEXCLUSIVE SERVICE</b>	<b>P_18</b>	<b>ALTERNATIVE MASONRY</b>	
		BRIQUETTE	P_62
<b>MASONRY VS ALTERNATIVE MASONRY</b>	<b>P_20</b>	CAMPAGNARD	P_64
		KATALINA	P_66
<b>STONES</b>		KAVA	P_68
ARCHITECTURAL	P_24	KENYA	P_70
CLAYDEN GRANDE	P_26	LORENA	P_72
LIMA	P_28	NORA	P_74
LONDANA	P_30	SIRENIS	P_76
LORADO	P_32	VIOLIE	P_78
LOTIS GRANDE	P_34		
LUGANO	P_36	<b>LINEA SYSTEM</b>	<b>P_80</b>
NOVELLO	P_38	<b>ACCESSORIES</b>	
OXFORD	P_40	SILLS	P_81
STANFORD	P_42		
<b>BRICKS</b>		<b>RINOX GROUP</b>	
CHAMPLAIN	P_46	RIALUX	P_82
CLAYDEN	P_48	AZORIA	P_84
LOTIS	P_50		
OSLO	P_52	<b>OTHER</b>	
ROMANIA	P_54	WARRANTY	P_86
ROXTON	P_56	RESOURCE CENTER	P_88
NORMANDIE	P_57	HOME EXTERIOR DESIGN TOOL	P_90
<b>COMMERCIAL PROJECTS</b>	<b>P_58</b>	COLOR CHART	P_92
		TECHNICAL INFORMATION CHART	P_95

« We aim to create  
timeless beauty  
through the innovation  
of *concrete products*. »



# The success of a *family* business



The family business founded by Rosa and Horacio Correia, with the active involvement of their three daughters and son, stands as a remarkable success story in the concrete industry. Through a shared vision of quality and innovation, this company has established itself as a leader, building on expertise and craftsmanship passed down through generations. The significant presence of women in a sector historically dominated by men highlights the forward-thinking

and inclusive vision of this family, which places diversity at the heart of its growth. Their family leadership is defined by a keen ability to anticipate market needs, unwavering commitment, and a constant passion for excellence. Through a collaborative approach and a unified vision, the company continues to grow, solidifying its position as a key player in the concrete industry.

## *Innovative* products and a creative team



After more than 25 years in business, Rinox continues to thrive thanks to the dedication of every family member. The foundations laid by founders Horacio and Rosa, centered on core family values, have fostered loyalty among employees and customers. Innovation, growth, loyalty, creativity, and expertise are at the heart of its values. Specializing in masonry and landscaping, the company has expanded its reach across Canada and the United States while continuing to grow.

Rinox offers three distinct collections that embody elegance, prestige, and quality, enabling the creation of unique projects. Whether for the façade or outdoor landscaping of a residential or commercial project, Rinox stands as your essential partner for designs that combine trend and excellence. With meticulous attention to detail and unmatched expertise, we turn your ideas into remarkable creations, always ensuring adherence to the highest quality standards.



## Made in Canada

Rinox products are proudly made locally. We offer cutting-edge concrete products with carefully selected, stable, and precisely calibrated components to ensure superior quality. By choosing Rinox, you're not just selecting exceptional products that combine innovation and performance—you're also making a meaningful contribution to supporting the local economy.

Learn more:





LOTIS & LOTIS GRANDE  
EGGSHELL  
RIALUX TIAGO  
SIENNA



# The strength of a group

The Rinox Group brings together manufacturing companies specializing in premium products for both the interior and exterior of your home. With our extensive range, you can design aesthetic spaces that combine durability and innovation. Whether you're looking to transform your façade, create a garden, or enhance your interiors, our companies offer tailored solutions that blend elegant design with robustness.

With the Rinox Group, bring exceptional projects to life that reflect your style and stand the test of time. We aim to create product combinations that seamlessly come together to realize unique projects. Rinox masonry products paired with Rialux aluminum siding provide the perfect combination for an outstanding project. For a complete vision, our landscaping products integrate perfectly with our Azoria fiberglass pools, turning your backyard into a true dream oasis.

## Masters in their field

The expertise and dedication of a passionate team drive the development of new products. Over the years, the Rinox Group has distinguished itself in the premium construction materials industry with its unique and timeless designs. The ongoing goal is to stay at the forefront of technological trends to meet the expectations of industry professionals.



PROMA XL COPING  
CAVIAR

RIALUX TIAGO  
SIENNA

AZORIA SAPPHIRE  
SEA SALT

## Our divisions



Concrete products manufacturer



Aluminum siding



Inground fiberglass pools

[RINOXGROUP.COM](http://RINOXGROUP.COM)



# A complete project signed Rinox Group



This project perfectly illustrates the expertise and versatility of the Rinox Group, seamlessly integrating its various divisions to create a truly spectacular outdoor space.

There are several benefits to such a combination. Azoria fiberglass pools are durable and low-maintenance, just like Rialux aluminum siding, which is lightweight and rust-resistant. The bricks and slabs, on the other hand, ensure un-

matched longevity. Together, these materials create a space that is not only aesthetically pleasing but also functional and long-lasting.

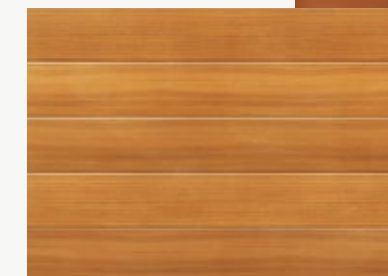
Moreover, incorporating multiple product lines into a single project provides unparalleled design flexibility, allowing you to play with textures and colors to craft a harmonious and adaptable space.

« We aim to create timeless beauty through the innovation of *exterior products.* »



PERFECT MATCH - RIALUX

LOTIS & LOTIS GRANDE  
EGGSHELL  
RIALUX TIAGO  
SIENNA



## PERFECT MATCH!

Azoria fiberglass pools blend seamlessly with Rinox slabs, creating a modern and functional harmony that elevates the aesthetics of the entire outdoor design. Additionally, Rialux products, with their natural wood-like finish, pair elegantly with Rinox bricks and stones.

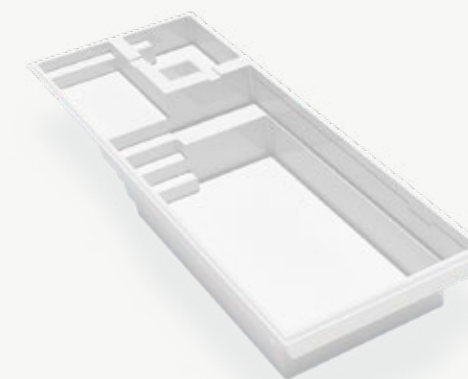


PERFECT MATCH - azoria

PROMA XL COPING  
CAVIAR

PROMA 3XL  
SKY GREY

AZORIA SAPPHIRE  
SEA SALT



Visit our  
blog here:



# Concrete



# Color

# of the Year



PREMIUM COLOR

# Amaretto

# 2025



CAMPAGNARD  
AMARETTO

## A REFINED AESTHETIC

Amaretto is a trendy color that creates a warm and inviting ambiance while adding a modern touch with its soft tones. Its ability to blend seamlessly with a variety of materials and settings makes it an ideal choice for those seeking a balance between timelessness and contemporary sophistication.

CAMPAGNARD  
AMARETTO



# Elegance from the outside to the inside



## UNIFORMITY & TIMELESSNESS

The continuity from the exterior siding to the interior of a house represents much more than a simple aesthetic touch. It is a harmonious fusion between the exterior environment and interior spaces, creating an atmosphere of cohesion and unity. The judicious use of materials and patterns ensures a seamless transition, where the exterior is elegantly reflected inside, providing an exceptional visual and tactile experience. This clever integration helps create a welcoming and unique ambiance, where every detail is carefully considered to evoke a true connection between nature and the comfort of your home.

Discover  
our Alternative  
Masonry:



LONDANA  
AMARETTO  
RIALUX TIAGO  
DRIFTWOOD  
RIALUX TIMBERLAND  
EBONY

PERFECT MATCH - RIALUX

NEW



KENYA  
TONEXCLUSIVE SERVICE

# Bring your *vision* to life

With ToneXclusive, Rinox gives you the freedom to create a unique color for your home or architectural project. This exclusive service allows you to personalize every detail of your project, perfectly reflecting your style and vision. Collaborate with our experienced team, who will guide you through the process to bring your custom creations to life. We ensure

that each tailored shade meets Rinox's high standards while addressing the specific needs of your design. Visit our dedicated online page to explore eligible products, service details, and access the request form. Turn your project into a one-of-a-kind creation!



CAMPAGNARD  
TONEXCLUSIVE SERVICE

## An overview of the ToneXclusive service

- 1 Complete the online form
- 2 Payment of deposit and sending of samples
- 3 Color approval
- 4 Final production
- 5 Delivery

« *A customization* that makes all the difference. »

The ToneXclusive service is a fully customized and personalized offering designed to meet the unique needs of each client. To take advantage of this service, simply complete a request form detailing your project. This information allows us to understand your specific expectations and create a color perfectly aligned with your vision. By including an image, you help us capture the aesthetic you're aiming for, ensuring a unique solution that harmonizes perfectly with your requirements. This exclusive service provides a premium experience where every detail is considered for an exceptional result.

Start your exclusive project :



\*Important: Due to the tailored customization, prices may be higher than standard products. Please refer to the online terms for more details on rates and procedures.

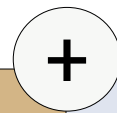
# The differences between Masonry and *Alternative* Masonry

MASONRY	
• Architectural	• Lotis
• Lima	• Lotis Grande
• Londana	• Romania
• Lorado	• Roxton
• Lugano	• Normandie
• Novello	• Clayden
• Oxford	• Clayden Grande
• Stanford	• Oslo
• Champlain	

ALTERNATIVE MASONRY	
• Briquette	• Lorena
• Campagnard	• Nora
• Katalina	• Sirenis
• Kava	• Violie
• Kenya	

## Pairings

The Rinox Masonry collection offers many complementary products for the interior and exterior of your project in the Alternative Masonry collection.



MASONRY	ALTERNATIVE MASONRY
Londana	Campagnard
Lorado	Lorena
Lotis	Sirenis
Lugano	Katalina

## Masonry



### BRICKS & STONES:

Installation with mortar.  
Approximate thickness 3 9/16"



### EXTERIOR

Residential, commercial, municipal or institutional.



### CLIMATE

Harsh



LONDANA  
MOORECREST

## Alternative masonry



### BRICKS & STONES:

Installation with thin set adhesive.  
Approximate thickness 1 1/2"



### INTERIOR & EXTERIOR

Residential projects



### CLIMATE

Temperate to harsh



KENYA  
MOORECREST

# Stones

*Timeless* stones  
that inspire  
generations

Architectural

Clayden Grande

NEW

Lima

Londana

Lorado

Lotis Grande

Lugano

Novello

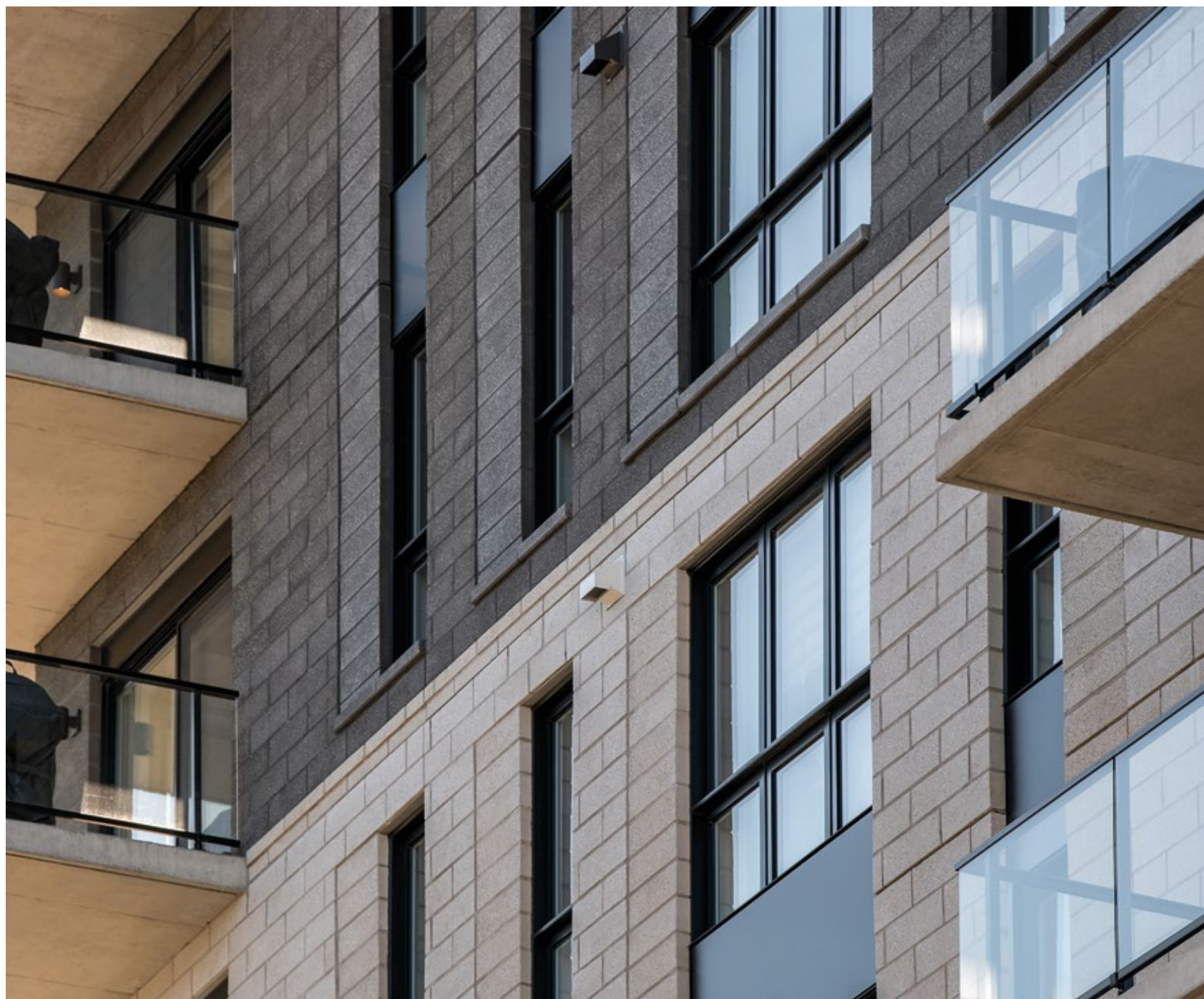
Oxford

Stanford



LIMA  
ALMOND WHITE  
RIALUX TIMBERLAND  
BARK

# ARCHITECTURAL



DEPTH x HEIGHT x WIDTH

ARCHITECTURAL  
WHISTLER & CAVIAR - POLISHED



**ARCHITECTURAL 4 x 24**

3 9/16" x 3 9/16" x 23 1/4"  
90mm x 90mm x 590mm



**ARCHITECTURAL 8 x 16**

3 9/16" x 7 1/2" x 15 3/8"  
90mm x 190mm x 390mm



**ARCHITECTURAL 8 x 24**

3 9/16" x 7 1/2" x 23 1/4"  
90mm x 190mm x 590mm



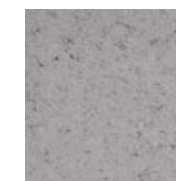
**ARCHITECTURAL 12 x 24**

3 9/16" x 11 3/8" x 23 1/4"  
90mm x 290mm x 590mm

AVAILABLE OPTIONS

BUSH HAMMERED OR POLISHED

STANDARD



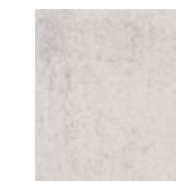
GREY

PREMIUM



CAVIAR

PRESTIGE



WHISTLER

**ARCHITECTURAL 4 x 24**

8 rows  
11.88 ft<sup>2</sup> — 18 units per row  
95.04 ft<sup>2</sup> — 144 units per skid  
3743 lbs

**ARCHITECTURAL 8 x 16**

4 rows  
17.6 ft<sup>2</sup> — 20 units per row  
70.4 ft<sup>2</sup> — 80 units per skid  
2816 lbs

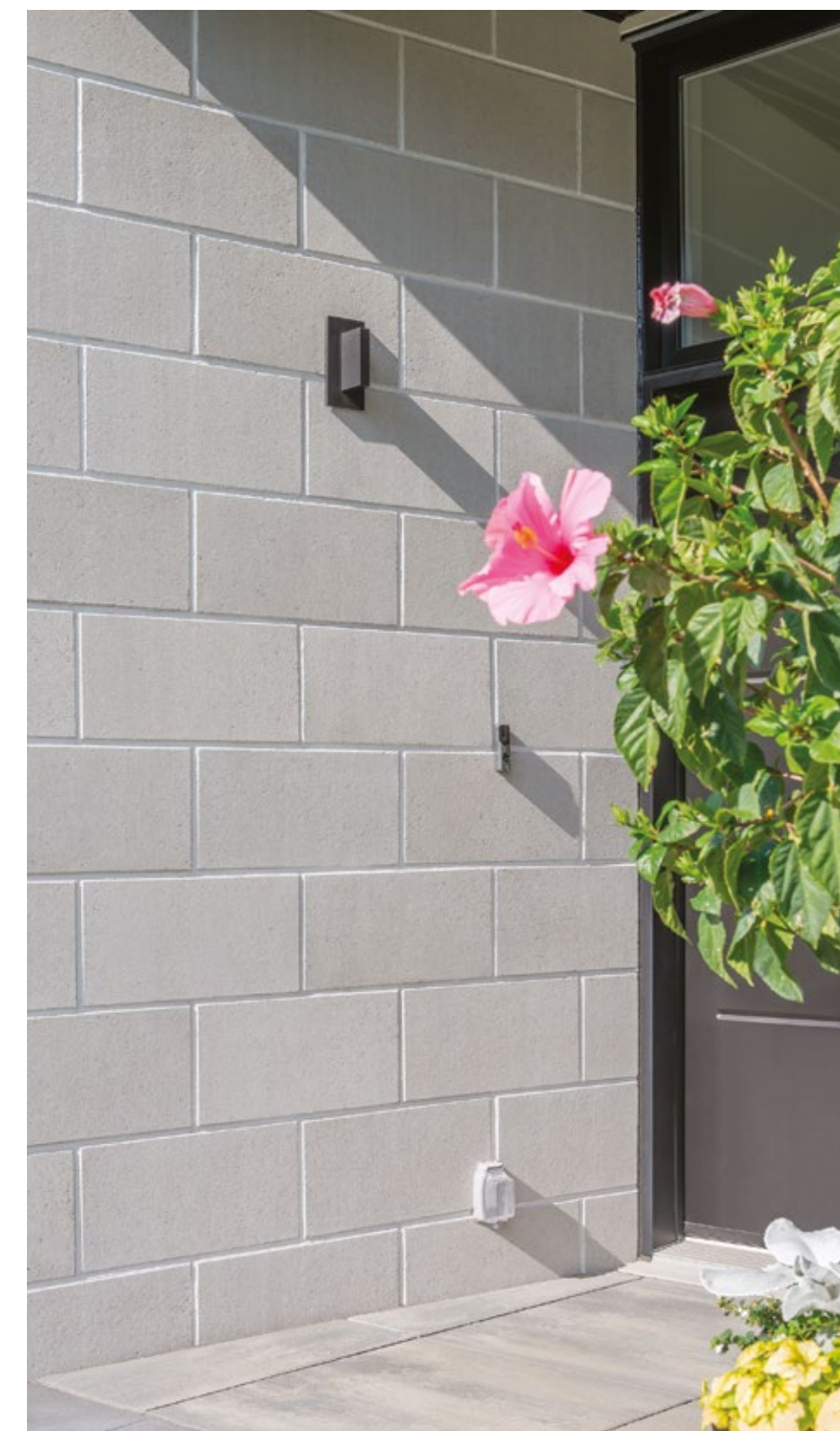
**ARCHITECTURAL 8 x 24**

8 rows  
10.64 ft<sup>2</sup> — 8 units per row  
85.12 ft<sup>2</sup> — 64 units per skid  
3202 lbs

**ARCHITECTURAL 12 x 24**

8 rows  
12 ft<sup>2</sup> — 6 units per row  
96 ft<sup>2</sup> — 48 units per skid  
3630 lbs

ARCHITECTURAL  
WHISTLER



# CLAYDEN GRANDE



CLAYDEN & CLAYDEN GRANDE  
HUSKY

DEPTH x HEIGHT x WIDTH

A



B



C



**CLAYDEN GRANDE**

3 1/2" x 5 1/8" x 11 3/4"

90mm x 130mm x 298mm

3 1/2" x 5 1/8" x 17 3/4"

90mm x 130mm x 451mm

3 1/2" x 5 1/8" x 23 5/8"

90mm x 130mm x 600mm

PREMIUM



TRUFFLE



VOLCANO

PRESTIGE



HUSKY



WHISTLER

7 rows

10.08 ft<sup>2</sup> per row

70.6 ft<sup>2</sup> per skid

Weight to come

**IDEAL CONFIGURATION**

Clayden : 70 %

Clayden Grande : 30 %



The Clayden Grande, used in conjunction with the Clayden brick, is perfect for creating a *mid-century* style stone.

CLAYDEN & CLAYDEN GRANDE  
HUSKY

RIALUX TIAGO  
EBONY



# LIMA



PERFECT MATCH - RIALUX

DEPTH x HEIGHT x WIDTH

A



**LIMA**

3 9/16" x 3 9/16" x variable

90mm x 90mm x variable

B



3 9/16" x 5 1/2" x variable

90mm x 140mm x variable

7 rows

8.9 ft<sup>2</sup> per row

62.3 ft<sup>2</sup> per skid

1940 lbs

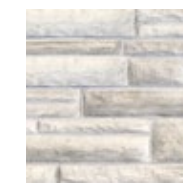
Urban and modern,  
Lima matches current  
*architectural* trends.

STANDARD



CHARCOAL

PREMIUM



ALMOND WHITE



ICY GREY

PRODUCT OFFERED WITH OUR TONEXCLUSIVE SERVICE



**LIMA**  
ALMOND WHITE  
RIALUX TIMBERLAND  
BARK

# LONDANA



PRODUCT OFFERED WITH OUR TONEXCLUSIVE SERVICE

## LONDANA

7 rows

8.9 ft<sup>2</sup> per row

62.3 ft<sup>2</sup> per skid

2214 lbs

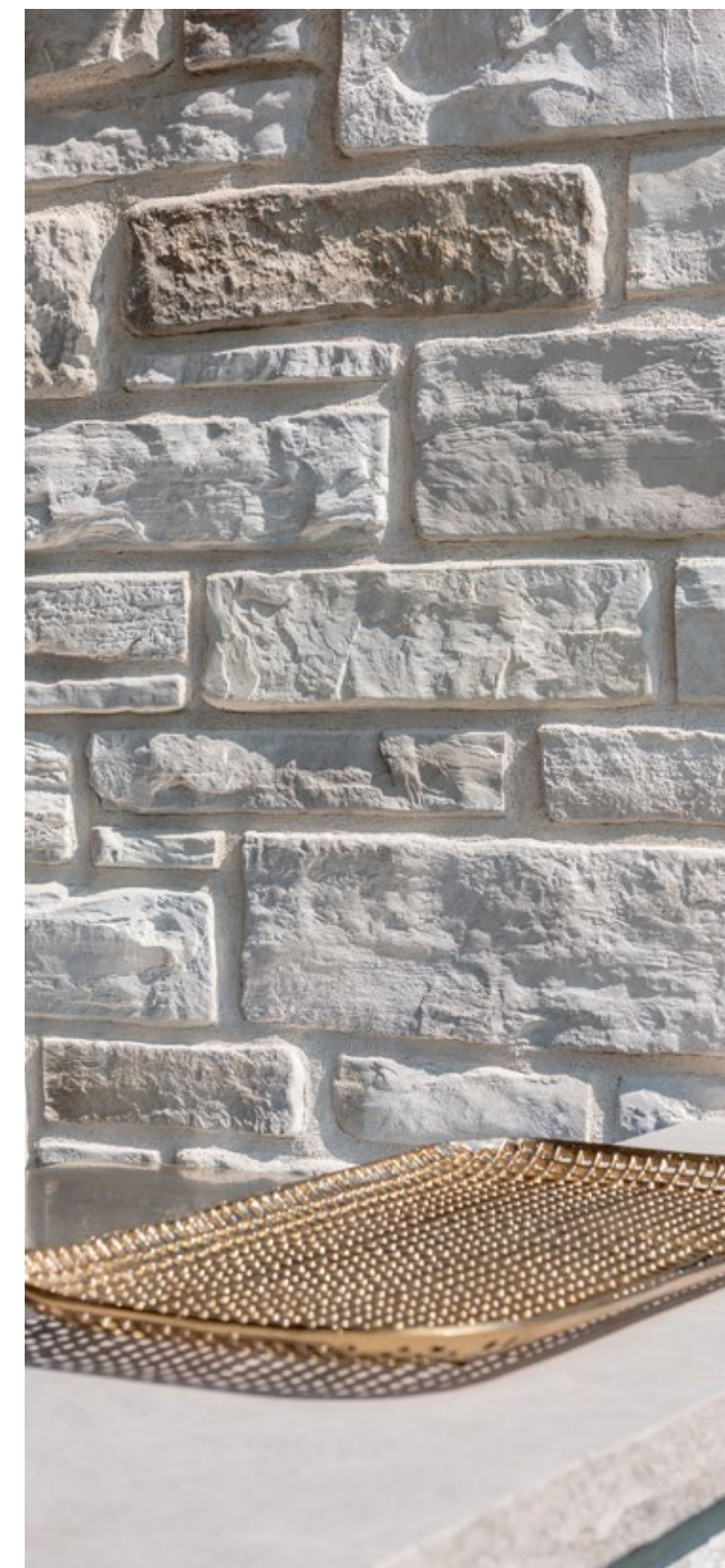
## LONDANA GRANDE

7 rows

8 ft<sup>2</sup> per row

56 ft<sup>2</sup> per skid

2026 lbs



The innovative Londana stone adds *prestige* and distinction to any home.

DEPTH x HEIGHT x WIDTH

LONDANA  
TONEXCLUSIVE SERVICE

A



B



A



### LONDANA

3 15/16" x 3 3/8" x variable

100mm x 85mm x variable

### LONDANA GRANDE

3 15/16" x 7 1/16" x variable

100mm x 180mm x variable

LONDANA  
TONEXCLUSIVE SERVICE

# LORADO



DEPTH x HEIGHT x WIDTH

A



**LORADO**

3 9/16" x 3 9/16" x variable

90mm x 90mm x variable

B



3 9/16" x 5 1/2" x variable

90mm x 140mm x variable

7 rows

8.9 ft<sup>2</sup> per row

62.3 ft<sup>2</sup> per skid

1940 lbs

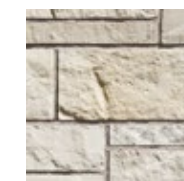
Lorado stone stands out for its *zen*, modern and popular look.

STANDARD



CHARCOAL

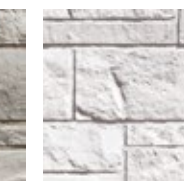
PREMIUM



ALMOND WHITE



ICY GREY



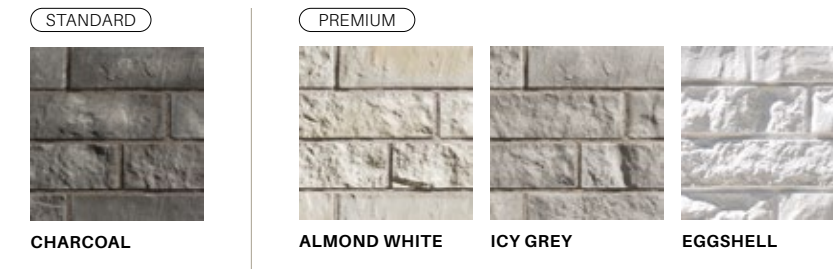
EGGSHELL

PRODUCT OFFERED WITH OUR TONEXCLUSIVE SERVICE



LORADO  
ICY GREY

# LOTIS GRANDE



PRODUCT OFFERED WITH OUR TONEXCLUSIVE SERVICE



DEPTH x HEIGHT x WIDTH

A



**LOTIS GRANDE**

3 9/16" x 7 1/2" x variable

90mm x 190mm x variable

7 rows

8 ft<sup>2</sup> per row

56 ft<sup>2</sup> per skid

2022 lbs

LOTIS & LOTIS GRANDE  
EGGSHELL

RIALUX BOLTON  
GREY OAK

The Lotis brick can be installed with the Lotis Grande as an insert to create a chic and *contemporary* look.

**IDEAL CONFIGURATION**

Lotis: 70 %  
Lotis Grande: 30 %



# LUGANO



PRODUCT OFFERED WITH OUR TONEXCLUSIVE SERVICE

### LUGANO A

7 rows  
8.9 ft<sup>2</sup> per row  
62.3 ft<sup>2</sup> per skid  
2199 lbs

### LUGANO B

7 rows  
9.7 ft<sup>2</sup> per row  
67.9 ft<sup>2</sup> per skid  
2729 lbs

### IDEAL CONFIGURATION

Lugano A : 70 %  
Lugano B : 30 %

The Lugano stone's immense popularity is due to its close resemblance to *natural* stone.



LUGANO OCEAN

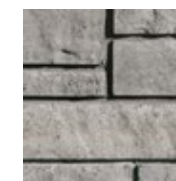
DEPTH x HEIGHT x WIDTH

A		B		C		A	
<b>LUGANO A</b>		<b>LUGANO B</b>				<b>LUGANO B</b>	
3 5/8" x 3 1/4" x variable		3 5/8" x 4" x variable		3 5/8" x 8" x variable		3 5/8" x 12" x variable	
92mm x 83mm x variable		92mm x 102mm x variable		92mm x 203mm x variable		92mm x 305mm x variable	

# NOVELLO



STANDARD



ASH CHARCOAL

PRESTIGE



MIST

8 rows

12.25 ft<sup>2</sup> per row

98 ft<sup>2</sup> per skid

3740 lbs

The Novello stone stands out for its *versatility*.

It is both modern and traditional and can adapt to all styles.



NOVELLO  
MIST  
RIALUX TIMBERLAND  
GREY OAK

DEPTH x HEIGHT x WIDTH

A



B



C



NOVELLO

3 9/16" x 1 15/16" x 11 11/16"  
90mm x 50mm x 297mm

3 9/16" x 4 5/16" x variable  
90mm x 110mm x variable

3 9/16" x 6 11/16" x variable  
90mm x 170mm x variable

# OXFORD



PERFECT MATCH - RIALUX

DEPTH x HEIGHT x WIDTH

A



B



C



**OXFORD**

3 9/16" x 1 15/16" x 11 11/16"  
90mm x 50mm x 297m

3 9/16" x 4 5/16" x variable  
90mm x 110mm x variable

3 9/16" x 6 11/16" x variable  
90mm x 170mm x variable

**OXFORD**  
WHISTLER  
**RIALUX TIAGO**  
DRIFTWOOD

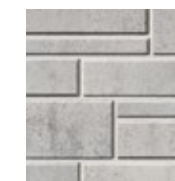
8 rows  
12.4 ft<sup>2</sup> per row  
99.2 ft<sup>2</sup> per skid  
3998 lbs

STANDARD

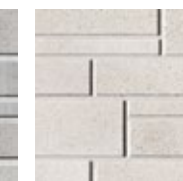


ASH CHARCOAL

PRESTIGE



MIST



WHISTLER

The Oxford stands out with its *clean* lines, smooth texture and authentic colors.



**OXFORD**  
WHISTLER

# STANFORD



LINEAR INSTALLATION

DEPTH x HEIGHT x WIDTH

A



**STANFORD**

3 9/16" x 1 15/16" x 11 11/16"  
90mm x 50mm x 297m

B



3 9/16" x 4 5/16" x variable  
90mm x 110mm x variable

C



3 9/16" x 6 11/16" x variable  
90mm x 170mm x variable

8 rows  
12.4 ft<sup>2</sup> per row  
99.2 ft<sup>2</sup> per row  
3998 lbs

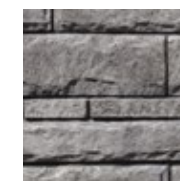
The Stanford stone stands out with its *timeless* look, slightly chiselled texture, and natural colors.

PREMIUM



TRUFFLE

PRESTIGE



HUSKY



MIST



STANFORD  
HUSKY

# Bricks

A long-lasting  
*classic* siding

Champlain

Clayden

Liano

Lotis

Oslo

Romania

Roxton

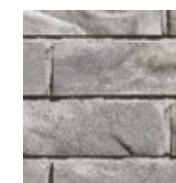
Normandie



# CHAMPLAIN



STANDARD



ASH CHARCOAL

PREMIUM



OKA BEIGE

8 rows

13.5 ft<sup>2</sup> per row

108 ft<sup>2</sup> per skid

3855 lbs

This brick can be installed to create a textured, *luxurious* look to the exterior of your home.



DEPTH x HEIGHT x WIDTH

A



B



C



D



**CHAMPLAIN**

3 9/16" x 3 1/4" x 6 3/4"

90mm x 83mm x 174mm

3 9/16" x 3 1/4" x 10 5/8"

90mm x 83mm x 270mm

3 9/16" x 3 1/4" x 10 7/8"

90mm x 83mm x 276mm

3 9/16" x 3 1/4" x 14 11/16"

90mm x 83mm x 373mm

E



3 9/16" x 3 1/4" x 18"

90mm x 83mm x 457mm

# CLAYDEN



3D HOME EXTERIOR DESIGN TOOL

DEPTH x HEIGHT x WIDTH

A



CLAYDEN

3 1/2" x 2 3/8" x 11 3/4"

90mm x 60mm x 298mm

B



3 1/2" x 2 3/8" x 17 3/4"

90mm x 60mm x 451mm

C

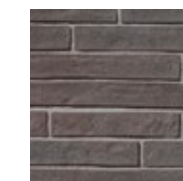


3 1/2" x 2 3/8" x 23 5/8"

90mm x 60mm x 600mm

CLAYDEN  
VOLCANO

PREMIUM



TRUFFLE



VOLCANO

PRESTIGE



HUSKY



WHISTLER

6 rows

11.04 ft<sup>2</sup> per row

66.24 ft<sup>2</sup> per skid

2450 lbs



Try our new  
Home Exterior  
Design Tool!

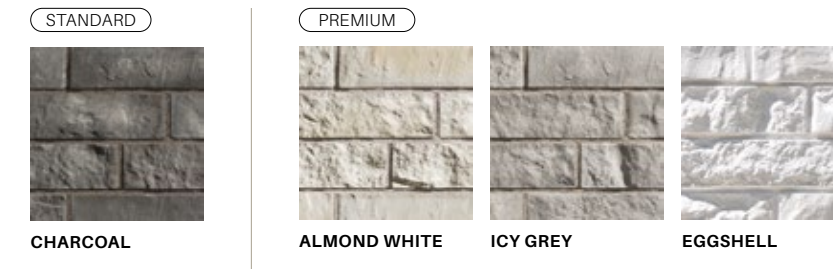
This brick is reminiscent of the clay brick of Ancient Rome, adding a touch of *mid-century* style to any project.



3D HOME EXTERIOR DESIGN TOOL

CLAYDEN  
TRUFFLE

# LOTIS



PRODUCT OFFERED WITH OUR TONEXCLUSIVE SERVICE

7 rows

8 ft<sup>2</sup> per row

56 ft<sup>2</sup> per skid

1848 lbs

The Gable House  
by Dessins Drummond:

A welcoming and comfortable  
home showcasing *local products*.



DEPTH x HEIGHT x WIDTH

LOTIS  
ALMOND WHITE

A



B



C



D



LOTIS

3 9/16" x 3 9/16" x 10"

90mm x 90mm x 254mm

LOTIS

3 9/16" x 3 9/16" x 12"

90mm x 90mm x 305mm

LOTIS

3 9/16" x 3 9/16" x 14"

90mm x 90mm x 355mm

LOTIS

3 9/16" x 3 9/16" x 18"

90mm x 90mm x 457mm

LOTIS  
ALMOND WHITE

# OSLO



DEPTH x HEIGHT x WIDTH

A



**OSLO**

3 9/16" x 2 3/8" x 11 3/4"

90mm x 60mm x 298mm

B



3 9/16" x 2 3/8" x 17 3/4"

90mm x 60mm x 451mm

C

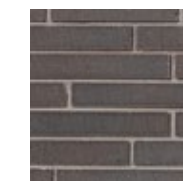


3 9/16" x 2 3/8" x 23 5/8"

90mm x 60mm x 600mm

**OSLO**  
WHISTLER  
**RIALUX TIAGO**  
SIENNA

PREMIUM



TRUFFLE

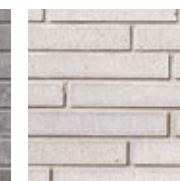


VOLCANO

PRESTIGE



HUSKY



WHISTLER

6 rows

11.04 ft<sup>2</sup> per row

66.24 ft<sup>2</sup> per skid

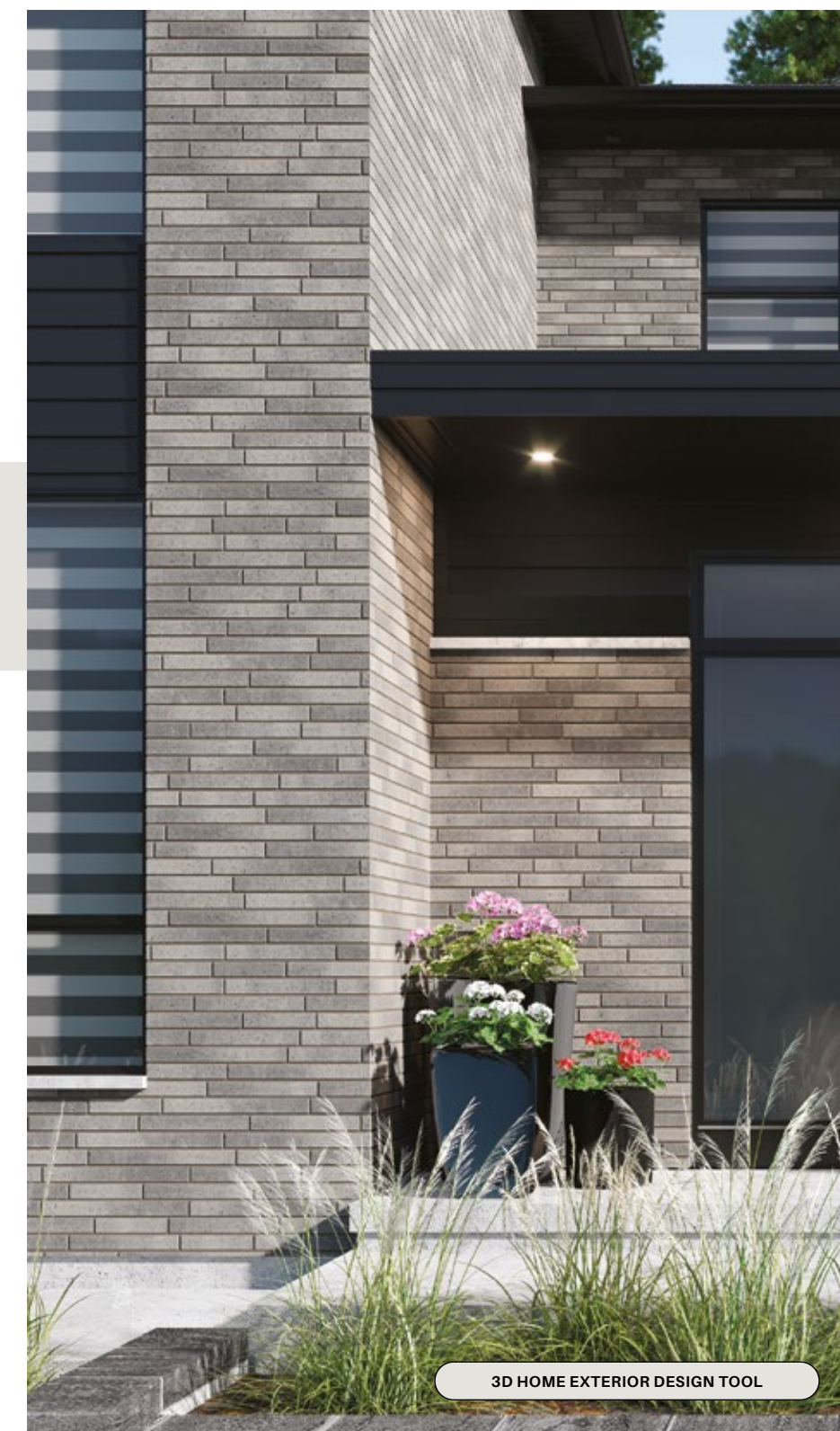
2450 lbs



Try our new  
Home Exterior  
Design Tool!

*Best pick!*

This new thin and slender brick makes it possible to design refined and timeless projects.



**OSLO**  
HUSKY

# ROMANIA



DEPTH x HEIGHT x WIDTH

A



**ROMANIA**

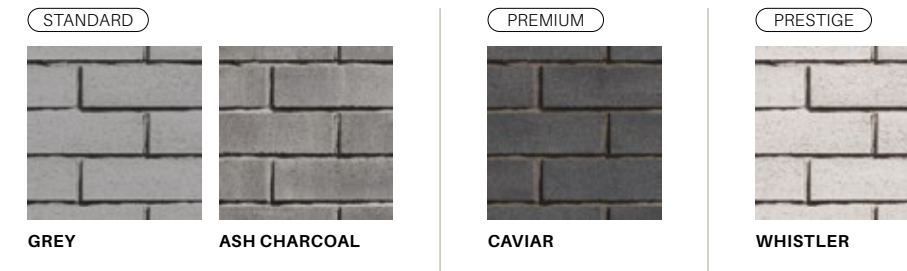
3 9/16" x 3 1/8" x 9 5/8"

90mm x 80mm x 244mm

**ROMANIA**  
ASH CHARCOAL

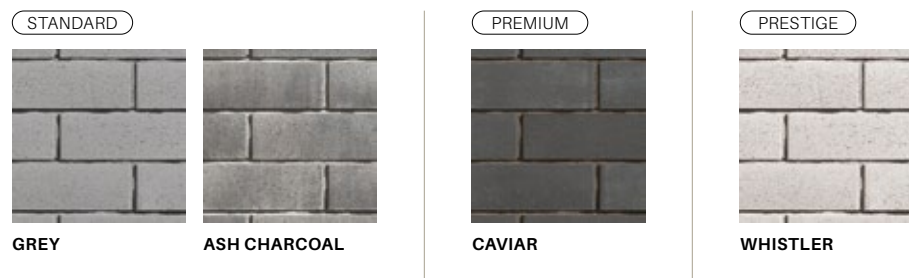
9 rows  
 12.3 ft<sup>2</sup> per row  
 110.7 ft<sup>2</sup> per skid  
 3945 lbs

This *classic* brick can easily be combined with any masonry stones or installed alone.



**ROMANIA**  
WHISTLER

# ROXTON

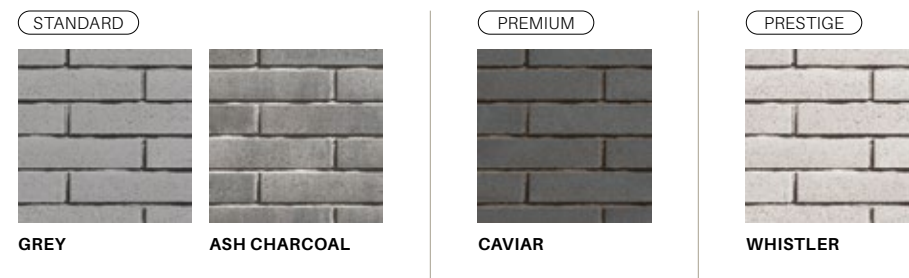


DEPTH x HEIGHT x WIDTH

**ROXTON**  
 3 9/16" x 3 9/16" x 11 3/8"  
 90mm x 90mm x 290mm

8 rows  
 11.62 ft<sup>2</sup> per row  
 93 ft<sup>2</sup> per skid  
 3415 lbs

# NORMANDIE



DEPTH x HEIGHT x WIDTH

**NORMANDIE**  
 3 9/16" x 2 1/4" x 11 3/8"  
 90mm x 57mm x 290mm

10 rows  
 7.79 ft<sup>2</sup> per row  
 77.9 ft<sup>2</sup> per skid  
 2715 lbs



OSLO  
WHISTLER



ROXTON  
WHISTLER

**COMMERCIAL BRICK**

The exterior cladding of this commercial building has been meticulously designed with Roxton brick, a material known for its smooth texture and decidedly modern aesthetic. This thoughtful choice seamlessly blends the refined look of brick with the building's contemporary architecture, creating a perfect harmony between design and functionality. Not only does the Roxton brick add a sleek and elegant touch to the structure, but it also ensures exceptional durability, withstanding weather and external stresses while maintaining the project's contemporary appeal.

# Rinox for your *commercial* projects

**SUSTAINABLE PRODUCTS**

For over 25 years, Rinox has been committed to providing high-end, durable products specifically designed to meet the requirements of commercial-type projects. Our commitment to quality and innovation has solidified our reputation, making Rinox the preferred choice for those seeking exceptional, long-lasting solutions for their business initiatives for over a quarter of a century



ARCHITECTURAL  
WHISTLER

ROXTON  
ASH CHARCOAL



ROXTON  
CAVIAR



« Exceptional and *durable* solutions for your commercial ventures. »

Discover our  
Resource  
Center:



# Alternative

Incomparable *continuity*  
from the outside  
to the inside with  
decorative stones

Briquette

Campagnard

Katalina

Kava

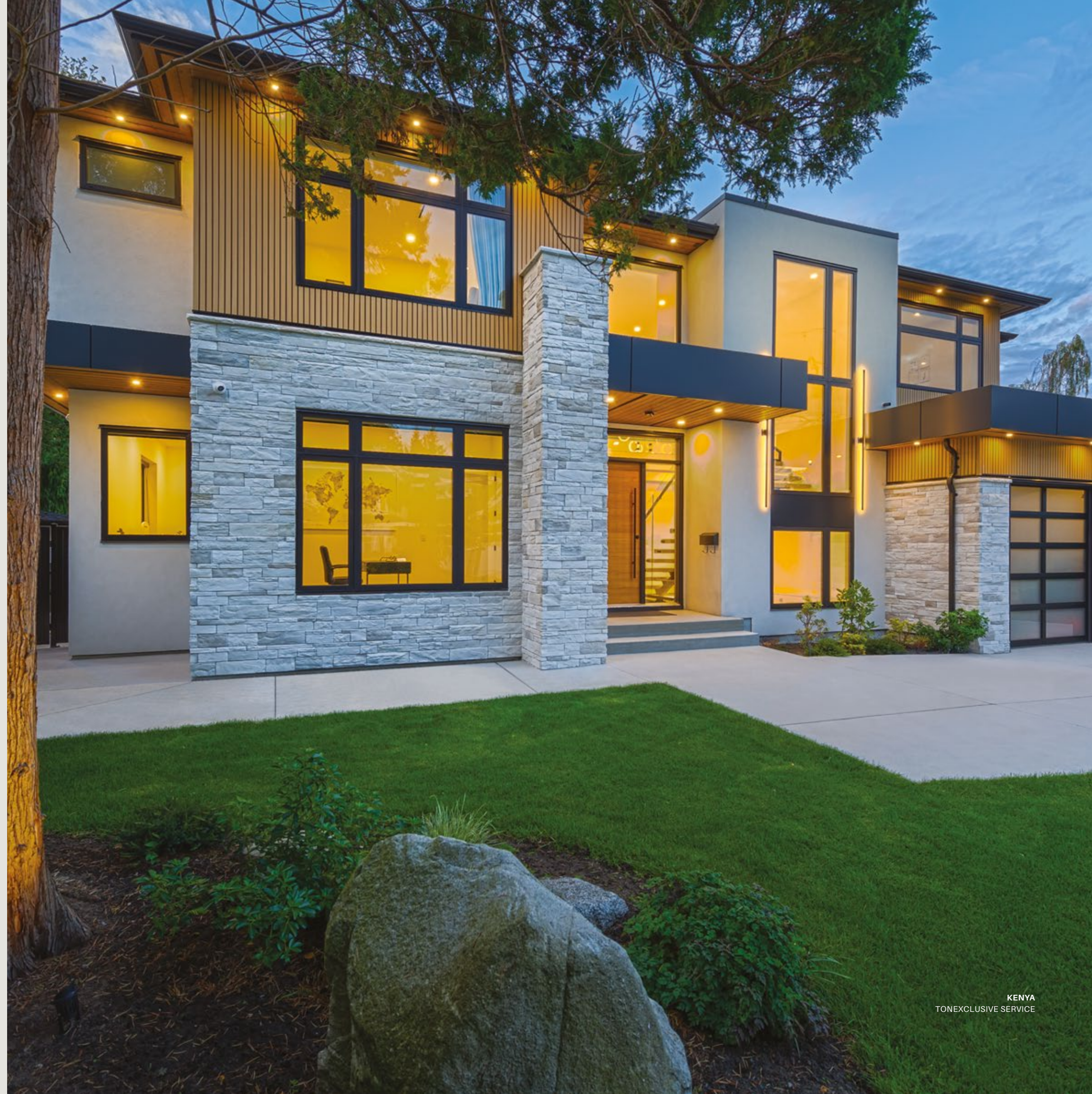
Kenya

Lorena

Nora

Sirenis

Violie



# BRIQUETTE



STANDARD



BLENDED WHITE

PRODUCT OFFERED WITH OUR TONEXCLUSIVE SERVICE

## BRIQUETTE

78 ft<sup>2</sup> per crate

600 lbs

## BRIQUETTE CORNER 90

68 lin.ft per crate

34 lin.ft per half-crate

600 lbs

*Elegant* and timeless, the Briquette is perfect for all classic projects.



BRIQUETTE  
BLENDED WHITE

DEPTH x HEIGHT x WIDTH

A



### BRIQUETTE

3/4" x 3 3/4" x 8 1/2"

19mm x 95mm x 216mm

### BRIQUETTE CORNER

3/4" x 3 3/4" x 8 1/2"

19mm x 95mm x 216mm

# CAMPAGNARD



PRODUCT OFFERED WITH OUR TONEXCLUSIVE SERVICE

## CAMPAGNARD

40.2 ft<sup>2</sup> per crate

504 lbs

## CAMPAGNARD CORNER

30 lin.ft per crate

16 lin.ft per half-crate

263 lbs

It brings prestige and *distinction* to any home, complementing both modern and rustic styles.



## CAMPAGNARD CORNER

1 1/2" x 1 3/4", 3 3/4", 5 1/2", 7 1/4" x 8", 10", 12"

38mm x 45mm, 95mm, 140mm, 185mm x 203mm, 254mm, 305mm

CAMPAGNARD AMARETTO

DEPTH x HEIGHT x WIDTH



## CAMPAGNARD

variable x 1 3/4" x 8", 12", 20"

variable x 45mm x 203mm, 305mm, 508mm



variable x 3 3/4" x 8", 12", 20"

variable x 95mm x 203mm, 305mm, 508mm



variable x 5 1/2" x 8", 12", 20"

variable x 140mm x 203mm, 305mm, 508mm



variable x 7 1/4" x 8", 12", 20"

variable x 185mm x 203mm, 305mm, 508mm

CAMPAGNARD AMARETTO

# KATALINA



STANDARD



MOORECREST

AMARETTO

PRODUCT OFFERED WITH OUR TONEXCLUSIVE SERVICE

## KATALINA

40.2 ft<sup>2</sup> per crate

458 lbs

## KATALINA CORNER

30 lin.ft per crate

16 lin.ft per half-crate

430 lbs

This stone stands out for its *beauty* and its look that is similar to natural stone.



KATALINA  
MOORECREST

DEPTH x HEIGHT x WIDTH

A



### KATALINA

variable x 3 1/2" x 8", 12", 20",  
variable x 89mm  
x 203mm, 305mm, 508mm

B



variable x 7 1/2" x 8", 12", 20"  
variable x 190mm  
x 203mm, 305mm, 508mm

C



variable x 11 1/2" x 8", 12", 20"  
variable x 292mm  
x 203mm, 305mm, 508mm

### KATALINA CORNER

variable x 3 1/2", 7 1/2",  
11 1/2" x 8", 10", 12"

variable x  
89mm, 190mm, 292mm  
x 203mm, 254mm, 305mm

# KAVA



STANDARD



AMARETTO

PRODUCT OFFERED WITH OUR TONEXCLUSIVE SERVICE

## KAVA

35 ft<sup>2</sup> per crate

460 lbs

## KAVA CORNER

30 lin.ft per crate

460 lbs

The Kava stone adds *rustic*, natural charm to your home, making it ideal for a farmhouse style.



DEPTH x HEIGHT x WIDTH

KAVA  
TONEXCLUSIVE SERVICE

A



B



C



D



## KAVA

variable x variable x variable

B

variable x variable x variable

C

variable x variable x variable

D

variable x variable x variable

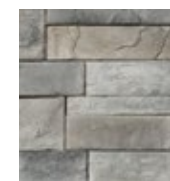
## KAVA CORNER

variable x variable x variable

# KENYA



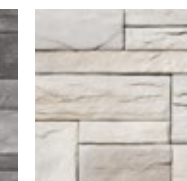
STANDARD



MOORECREST



CHARCOAL



ALMOND WHITE

PRODUCT OFFERED WITH OUR TONEXCLUSIVE SERVICE

## KENYA

35 ft<sup>2</sup> per crate

455 lbs

## KENYA CORNER

32 lin.ft per crate

16 lin.ft per half-crate

450 lbs

*The popular!*

Inside or outside your home, this stone will ensure a most elegant result.



DEPTH x HEIGHT x WIDTH

A



### KENYA

variable x 2" x 8", 12", 20",

variable x 51mm  
x 203mm, 305mm, 508mm

B



variable x 4" x 8", 12", 20"

variable x 102mm  
x 203mm, 305mm, 508mm

C



variable x 6" x 8", 12", 20"

variable x 152mm  
x 203mm, 305mm, 508mm

### KENYA CORNER

variable x 2", 4", 6"  
x 8", 10", 12"

variable x  
51mm, 102mm, 152mm,  
x 203mm, 254mm, 305mm

KENYA  
TONEXCLUSIVE SERVICE

# LORENA



PRODUCT OFFERED WITH OUR TONEXCLUSIVE SERVICE

## LORENA

48 ft<sup>2</sup> per crate

635 lbs

## LORENA CORNER

30 lin.ft per crate

16 lin.ft per half-crate

340 lbs

The Lorena stone differentiates itself by its zen, *modern* and popular look.



DEPTH x HEIGHT x WIDTH

LORENA  
ALMOND WHITE



## LORENA

1 1/2" x 1 9/16" x variable

38mm x 40mm x variable



1 1/2" x 3 9/16" x variable

38mm x 90mm x variable



1 1/2" x 5 1/2" x variable

38mm x 140mm x variable



1 1/2" x 7 1/2" x variable

38mm x 190mm x variable

## LORENA CORNER

1 1/2" x 1 9/16", 3 9/16", 5 1/2",  
7 1/2" x variable

38mm x 40mm, 90mm, 140mm,  
190mm x variable

LORENA  
ICY GREY

# NORA



STANDARD



MOORECREST

VANILLA BEIGE

PRODUCT OFFERED WITH OUR TONEXCLUSIVE SERVICE

## NORA

45 ft<sup>2</sup> per crate

635 lbs

## NORA CORNER

30 lin.ft per crate

16 lin.ft per half-crate

340 lbs

Nora stone stands out for its modernity and *sophisticated* urban look.



NORA  
VANILLA BEIGE

DEPTH x HEIGHT x WIDTH

NORA  
MOORECREST

A



B



C



D



## NORA

1 1/2" x 1 9/16" x variable

38mm x 40mm x variable

1 1/2" x 3 9/16" x variable

38mm x 90mm x variable

1 1/2" x 5 1/2" x variable

38mm x 140mm x variable

1 1/2" x 7 1/2" x variable

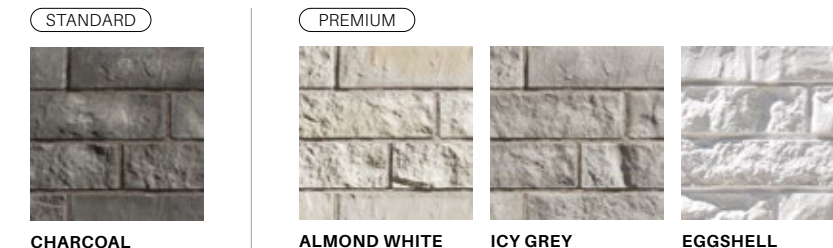
38mm x 190mm x variable

## NORA CORNER

1 1/2" x 1 9/16", 3 9/16", 5 1/2",  
7 1/2" x variable

38mm x 40mm, 90mm, 140mm,  
190mm x variable

# SIRENIS



PRODUCT OFFERED WITH OUR TONEXCLUSIVE SERVICE

**SIRENIS**

46 ft<sup>2</sup> per crate

521 lbs

**SIRENIS GRANDE**

47 ft<sup>2</sup> per crate

545 lbs

**SIRENIS CORNER**

30 lin.ft per crate

16 lin.ft per half-crate

340 lbs

**SIRENIS CORNER**

1 1/2" x 3 9/16" x 10", 14", 12", 18"

38mm x 90mm

x 254mm, 305mm, 355mm, 457mm

(E)



**SIRENIS GRANDE**

1 1/2" x 7 1/2" x 16", 20"

38mm x 190mm x 406mm, 508mm



SIRENIS  
ICY GREY

DEPTH x HEIGHT x WIDTH

SIRENIS  
ICY GREY

(A)



**SIRENIS**

1 1/2" x 3 9/16" x 10"

38mm x 90mm x 254mm

(B)



1 1/2" x 3 9/16" x 12"

38mm x 90mm x 305mm

(C)



1 1/2" x 3 9/16" x 14"

38mm x 90mm x 355mm

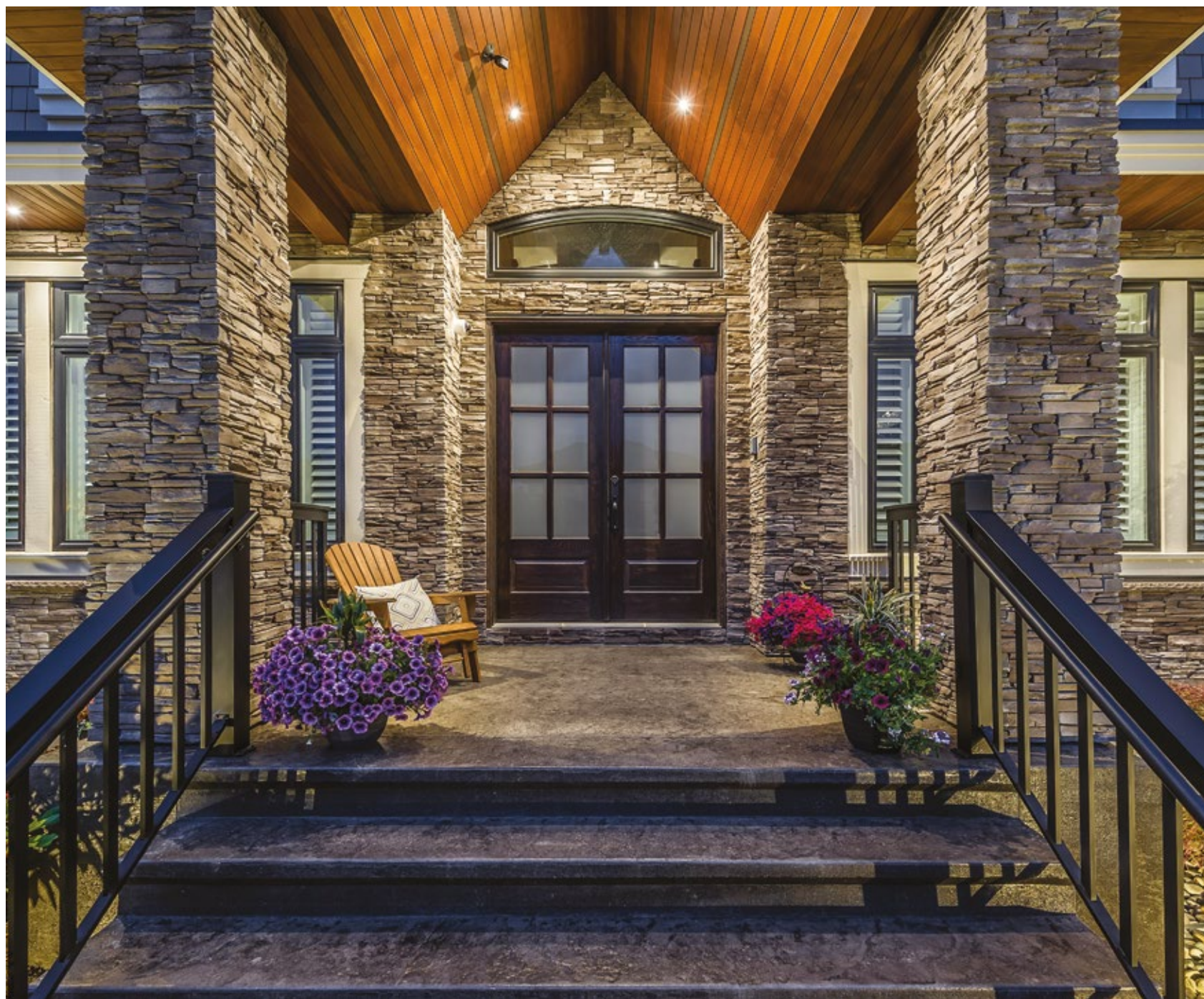
(D)



1 1/2" x 3 9/16" x 18"

38mm x 90mm x 457mm

# VIOLIE



STANDARD



CHARCOAL



MARIGOLD

PRODUCT OFFERED WITH OUR TONEXCLUSIVE SERVICE

## VIOLIE

46.8 ft<sup>2</sup> per crate

572 lbs

## VIOLIE CORNER

45 lin.ft per crate

16 lin.ft per half-crate

562 lbs

This stone will bring warmth and *elegance* to your projects.



VIOLIE  
CHARCOAL

DEPTH x HEIGHT x WIDTH

VIOLIE  
CAPPUCCINO (SPECIAL ORDER)

A



### VIOLIE

variable x 4 11/16" x 8"

variable x 119mm x 203mm

B



variable x 4 11/16" x 12"

variable x 119mm x 305mm

C



variable x 4 11/16" x 20"

variable x 119mm x 508mm

### VIOLIE CORNER

variable x 4 11/16" x 8", 12"

variable x 119mm  
x 203mm, 305mm

# Our *Linea* System



CAMPAGNARD  
AMARETTO

## AN INNOVATIVE SYSTEM

After extensive research, Rinox designed and patented an avant-garde system that facilitates thin veneer installation. Each piece is manufactured with spacers. The spacers allow for the creation of joints with a naturally constant width, without having to use other techniques normally used to maintain a uniform space between the stones. The spacers must be installed one on the other in order to have the exact measure needed to create the joints.



Available in these products:  
**Briquette / Campagnard / Katalina / Lorena / Sirenis**

# Sills & accessories

DEPTH x HEIGHT x WIDTH



## 30" SILL - MASONRY

3 9/16" x 6" x 30"

90mm x 153mm x 762mm

5 rows

8 units per row

40 units per skid

2088 lbs

AVAILABLE IN:  
ANTHRACITE, GREY & WHITE



This product features two reversible sides:  
One textured and one smooth.



30" SILL  
GREY

DEPTH x HEIGHT x WIDTH

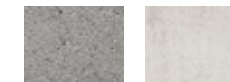


## 20" SILL - ALTERNATIVE MASONRY

3 9/16" x 2 3/4" x 20"

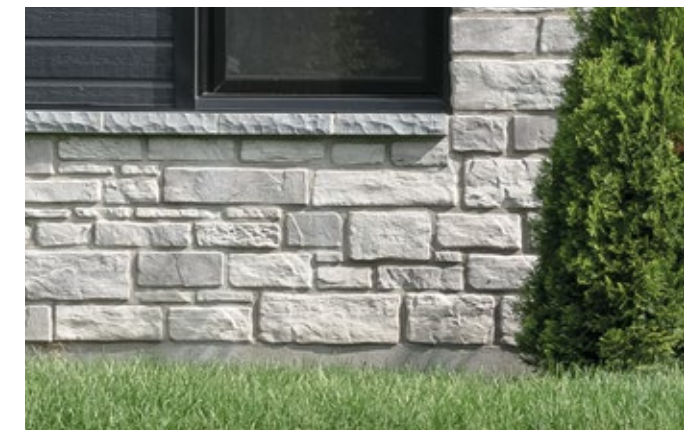
90mm x 70mm x 508mm

AVAILABLE IN:  
PERSIAN GREY & WHITE



40 units per crate

620 lbs



20" SILL  
WHITE

DEPTH x HEIGHT x WIDTH

## SWITCH

1 21/32" x 8" x 6"

42mm x 203mm x 152mm

AVAILABLE IN:  
PERSIAN GREY & WHITE



# RIALUX

ALUMINUM SIDING

Exterior siding that *stands out.*



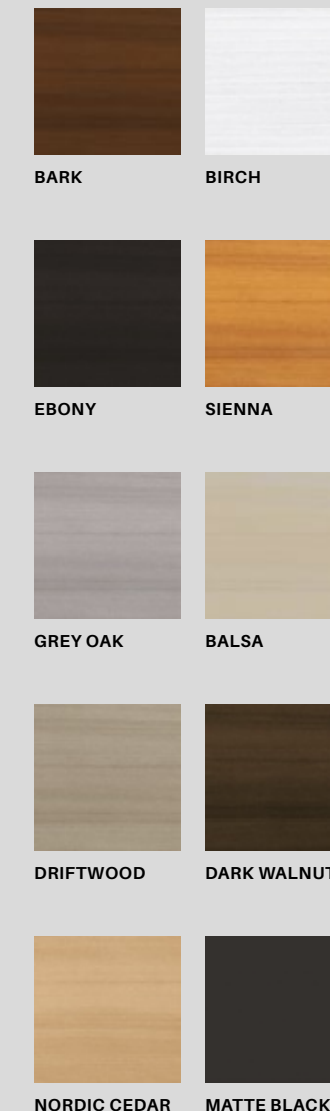
TIAGO  
BARK  
RINOX CAMPAGNARD  
OCEAN

## Natural wood look

Rialux offers unique aluminum panel collections with a natural wood-like finish. Whether you prefer a modern, industrial, or classic style, Rialux products are suitable for all architectural preferences. With Rialux, you have the freedom to elevate your architectural projects with durable and versatile aluminum panels that not only enhance the visual appeal but also provide long-lasting performance. Explore the possibilities and let your creativity flourish with Rialux.



TIMBERLAND  
SIENNA



Easy to install, elegant and with a 25-year warranty, Rialux products are ideal for any exterior or interior siding project. Its many market-leading advantages make it a must-have for today's architectural projects.

Rialux aluminum siding products have been rigorously tested and approved by a third-party laboratory. Our aluminum panels are of superior quality and meet all industry standards, including the extreme environmental conditions of the North American climate.

Discover the Rialux division:

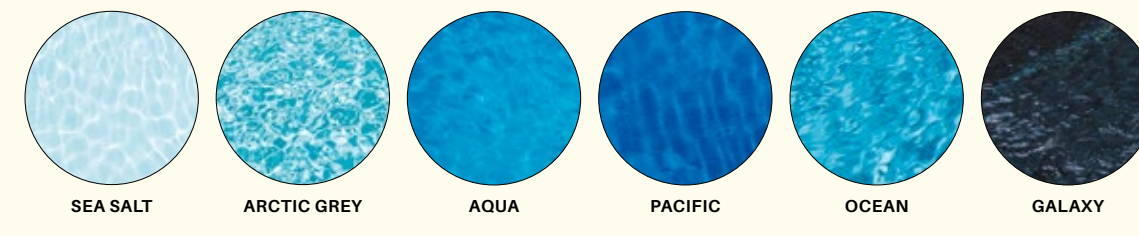


NEW

# Inground *fiberglass* pools



AQUARINO SAPPHIRE  
SEA SALT



# azoria



DOLPHIN BRITANNIA  
ARCTIC GREY

## Aquarino x Dolphin

Aquarino and Dolphin have merged, promoting the group to become the largest manufacturer of fiberglass pools in Canada. Initially, they remained two distinct companies; however, we have recently joined forces under a new brand name: Azoria. This merger aims to leverage the complementary strengths of both companies and offer a broader range of products catering to the needs of backyards of all sizes and styles, whether urban or rural. By combining our expertise and resources, we are better positioned to innovate, enhance the quality of our products, and provide exceptional service to our customers.



## The CovaTec difference

The Covatec difference goes beyond ease of installation. It's in the superior quality of materials we use to manufacture each pool, ensuring every model stands up to the demands of time and environment. We combine premium materials with groundbreaking design features, allowing us to continuously improve upon what exists in the industry.

AZORIA.CA

Discover the  
new Azoria  
Website:



# All of our products meet industry standards



## INNOVATIONS

Recognized for its avant-garde products, Rinox has made it its mission to consistently and accurately respond to constantly changing market trends. Its natural stone-like products are undoubtedly the most remarkable and the most appreciated by customers.

## 30 PATENTS

Rinox has developed several unique and innovative products with patents. Inventions that facilitate installation and allow customers to have exclusive and superior products.



## Extremely rich and durable colours



### RINOXTREM TECHNOLOGY

RinoXtrem technology enables the production of exceptionally durable and ultra-vibrant, color-fade resistant products. A unique technology that stands out in the industry because the color is found throughout and within the product. Our products are designed in a meticulously controlled environment. We carefully observe humidity and density levels

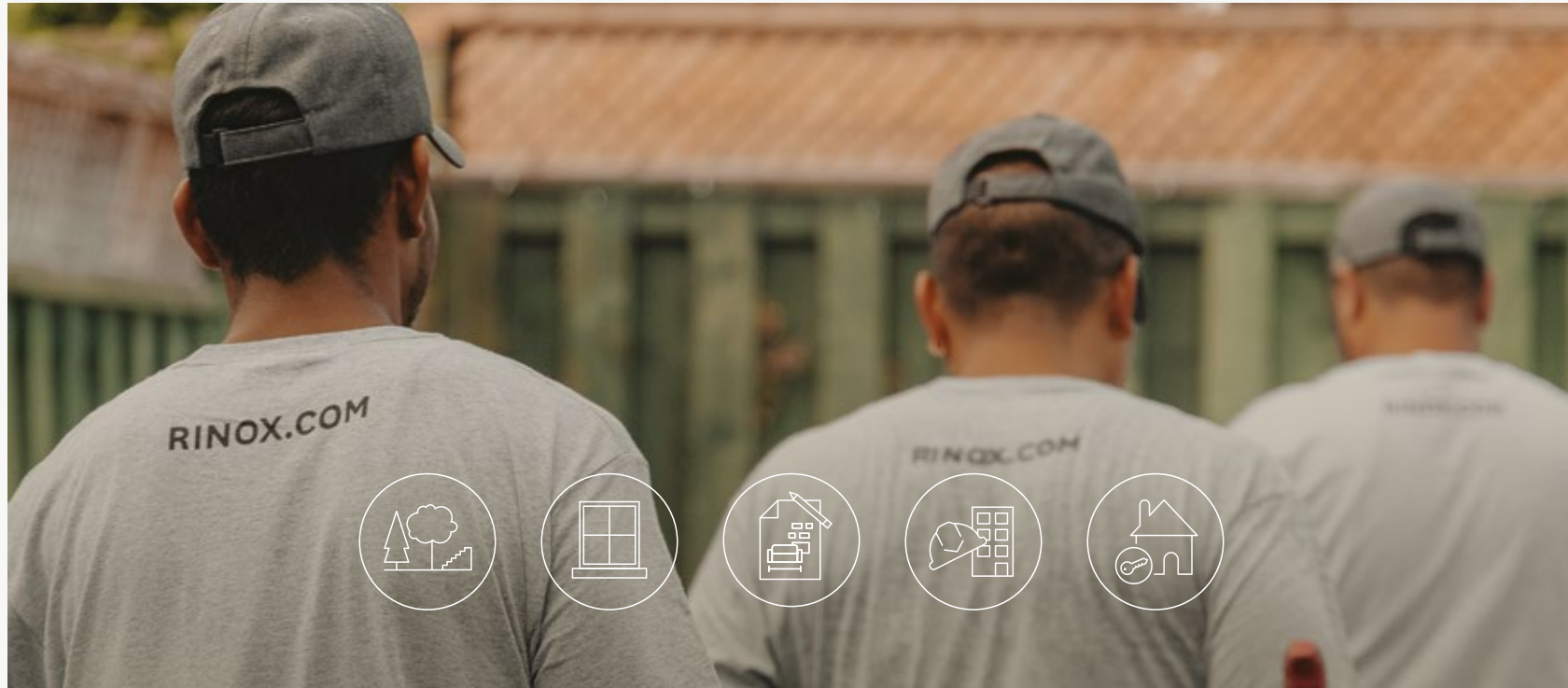
and rigorously analyze all factors surrounding the production process. The integrity of our colors is due to the perfect blend of quality control and the high performance of our state-of-the-art equipment.



*25-year* transferable protection on our products including installation\*.

REGISTER YOUR PURCHASE ONLINE:





# Online Resource Center

Whether you are an architect, contractor, designer, landscaper, mason, or homeowner, our resource center has been designed to meet all your needs, all in *one place*.

## TECHNICAL DATA SHEETS AND NORMS

Explore our detailed technical data sheets that provide all the necessary information about our products, including their features, standards, and installation recommendations. These documents are essential to ensure that every technical aspect of your projects is covered, guaranteeing results that meet the highest standards.

## ONLINE CATALOGS

Dive into a rich collection of projects completed with our materials, and discover how our products can transform your outdoor and indoor spaces. Each catalog is carefully crafted to provide you with innovative ideas and creative concepts tailored to various architectural styles.

## 3D TEXTURES

These new textures, created using a unique product scanning technology, will deliver the most realistic renderings quickly and efficiently. Create 3D designs that will impress like never before.



lightbeans®

## VIRTUAL SAMPLES

Our virtual samples digitally showcase our masonry products. The lighting effect allows you to visualize the texture and color of our products, helping you make your final choice. Their high level of realism creates the impression that your products are right at your fingertips!



## COLOR SAMPLES

Whether you're planning a masonry, landscaping, or interior design project, our color samples allow you to visualize the shades and textures of our products firsthand. Test and compare our colors directly at your project site to ensure the perfect selection and seamless integration into your space.



Discover  
our Resource  
Center:



# Home Exterior Design Tool

Explore this tool designed to help you visualize Rinox masonry products and their stunning range of colors, perfectly complementing Rialux aluminum products. Select your preferred scene and the specific products you're considering, providing you with valuable insights to confidently make your final decision. With this innovative tool at your fingertips, designing your dream exterior is just a few clicks away.

## RIALUX

### PERFECT MATCH WITH RIALUX

Rialux is a division of the Rinox Group that offers premium aluminum siding that stands out. Rialux products combine perfectly with Rinox masonry products to create unique designs.

SEE HOW YOUR COLOR CHOICES LOOK IN DAYLIGHT AND AT NIGHT.



- 1. **LONDANA**  
AMARETTO
- 2. **RIALUX TIMBERLAND**  
DRIFTWOOD
- 3. **RIALUX TIAGO**  
EBONY
- 4. **ROMANIA**  
ASH CHARCOAL

Try our Home Exterior Design Tool:



# Color chart

## Stones

### ARCHITECTURAL



GREY CAVIAR WHISTLER

### CLAYDEN GRANDE



TRUFFLE VOLCANO HUSKY WHISTLER

### LIMA



CHARCOAL ALMOND WHITE ICY GREY

### LONDANA



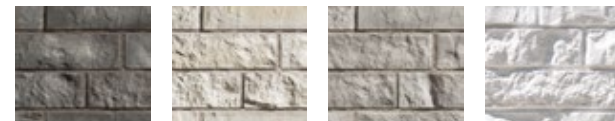
MOORECREST AMARETTO OCEAN MACCHIATO

### LORADO



CHARCOAL ALMOND WHITE ICY GREY EGGHELL

### LOTIS GRANDE



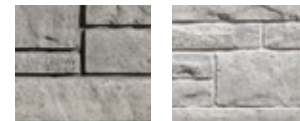
CHARCOAL ALMOND WHITE ICY GREY EGGHELL

### LUGANO



MOORECREST AMARETTO OCEAN

### NOVELLO



ASH CHARCOAL MIST

### OXFORD



ASH CHARCOAL MIST WHISTLER

### STANFORD



TRUFFLE HUSKY MIST

## Bricks

### CHAMPLAIN



ASH CHARCOAL OKA BEIGE

### CLAYDEN



TRUFFLE VOLCANO HUSKY WHISTLER

### LOTIS



CHARCOAL ALMOND WHITE ICY GREY EGGHELL

### OSLO



TRUFFLE VOLCANO HUSKY WHISTLER

### ROMANIA



GREY ASH CHARCOAL CAVIAR WHISTLER

### ROXTON



GREY ASH CHARCOAL CAVIAR WHISTLER

### NORMANDIE



GREY ASH CHARCOAL CAVIAR WHISTLER

## IMPORTANT

The colors of the products shown are as accurate as the photographs and printing process allow. We strongly suggest using an actual sample to make your color choice.

## Alternative Masonry

### BRIQUETTE



BLENDED WHITE

### CAMPAGNARD



MOORECREST AMARETTO OCEAN MACCHIATO

### KATALINA



MOORECREST AMARETTO

### KAVA



AMARETTO

### KENYA



MOORECREST CHARCOAL ALMOND WHITE

### LORENA



CHARCOAL ALMOND WHITE ICY GREY EGGSHELL

### NORA



MOORECREST VANILLA BEIGE

### SIRENIS



CHARCOAL ALMOND WHITE ICY GREY EGGSHELL

### VIOLIE



CHARCOAL MARIGOLD

## Rialux

### ALUMINUM SIDING



BARK BIRCH EBONY SIENNA GREY OAK BALSА DRIFTWOOD DARK WALNUT NORDIC CEDAR MATTE BLACK

## Technical information chart

### ARCHITECTURAL

PRODUCTS	ROWS PER SKID	PER ROW	PER SKID	WEIGHT
4 X 24	8 rows	11.88 ft <sup>2</sup> - 18 units	95.04 ft <sup>2</sup> - 144 units	3743 lbs
8 X 16	4 rows	17.6 ft <sup>2</sup> - 20 units	70.4 ft <sup>2</sup> - 80 units	2740 lbs
8 X 24	8 rows	10.64 ft <sup>2</sup> - 8 units	85.12 ft <sup>2</sup> - 64 units	3202 lbs
12 X 24	8 rows	12 ft <sup>2</sup> - 6 units	96 ft <sup>2</sup> - 48 units	3630 lbs

### STONES

PRODUCTS	ROWS PER SKID	PER ROW	PER SKID	WEIGHT
CLAYDEN GRANDE	7 rows	10.08 ft <sup>2</sup> per row	70.6 ft <sup>2</sup> per skid	Weight to come
LIMA	7 rows	8.9 ft <sup>2</sup> per row	62.3 ft <sup>2</sup> per skid	1940 lbs
LONDANA	7 rows	8.9 ft <sup>2</sup> per row	62.3 ft <sup>2</sup> per skid	2214 lbs
LORADO	7 rows	8.9 ft <sup>2</sup> per row	62.3 ft <sup>2</sup> per skid	1940 lbs
LOTIS GRANDE	7 rows	8 ft <sup>2</sup> per row	56 ft <sup>2</sup> per skid	2022 lbs
LUGANO	7 rows	8.9 ft <sup>2</sup> per row	62.3 ft <sup>2</sup> per skid	2199 lbs
NOVELLO	8 rows	12.25 ft <sup>2</sup> per row	98 ft <sup>2</sup> per skid	3740 lbs
OXFORD	8 rows	12.4 ft <sup>2</sup> per row	99.2 ft <sup>2</sup> per skid	3998 lbs
STANFORD	8 rows	12.4 ft <sup>2</sup> per row	99.2 ft <sup>2</sup> per skid	3998 lbs

### BRICKS

PRODUCTS	ROWS PER SKID	PER ROW	PER SKID	WEIGHT
CHAMPLAIN	8 rows	13.5 ft <sup>2</sup> per row	108 ft <sup>2</sup> per skid	3855 lbs
CLAYDEN	6 rows	11.04 ft <sup>2</sup> per row	66.24 ft <sup>2</sup> per skid	2450 lbs
LOTIS	7 rows	8 ft <sup>2</sup> per row	56 ft <sup>2</sup> per skid	1848 lbs
OSLO	6 rows	11.04 ft <sup>2</sup> per row	66.24 ft <sup>2</sup> per skid	2450 lbs
ROMANIA	9 rows	12.3 ft <sup>2</sup> per row	110.7 ft <sup>2</sup> per skid	3945 lbs
ROXTON	8 rows	11.62 ft <sup>2</sup> per row	93 ft <sup>2</sup> per skid	3415 lbs
NORMANDIE	10 rows	7.79 ft <sup>2</sup> per row	77.9 ft <sup>2</sup> per skid	2715 lbs

### ALTERNATIVE MASONRY - STONES

PRODUCTS	PER CRATE	WEIGHT
BRIQUETTE	78 ft <sup>2</sup> per crate	600 lbs
CAMPAGNARD	40.2 ft <sup>2</sup> per crate	504 lbs
KATALINA	40.2 ft <sup>2</sup> per crate	458 lbs
KAVA	35 ft <sup>2</sup> per crate	460 lbs
KENYA	35 ft <sup>2</sup> per crate	455 lbs
LORENA	48 ft <sup>2</sup> per crate	635 lbs
NORA	45 ft <sup>2</sup> per crate	635 lbs
SIRENIS	46 ft <sup>2</sup> per crate	521 lbs
VIOLIE	46.8 ft <sup>2</sup> per crate	572 lbs

### ALTERNATIVE MASONRY - CORNER

PRODUITS	PER CRATE	PER HALF-CRATE	WEIGHT
BRIQUETTE	68 lin.ft per crate	34 lin.ft per half-crate	600 lbs
CAMPAGNARD	30 lin.ft per crate	16 lin.ft per half-crate	263 lbs
KATALINA	30 lin.ft per crate	16 lin.ft per half-crate	430 lbs
KAVA	30 lin.ft per crate	-	460 lbs
KENYA	32 lin.ft per crate	16 lin.ft per half-crate	450 lbs
LORENA	30 lin.ft per crate	16 lin.ft per half-crate	340 lbs
NORA	30 lin.ft per crate	16 lin.ft per half-crate	340 lbs
SIRENIS	30 lin.ft per crate	16 lin.ft per half-crate	340 lbs
VIOLIE	45 lin.ft per crate	16 lin.ft per half-crate	562 lbs

### SILLS & ACCESSORIES

PRODUCTS	ROWS PER SKID	PER ROW	PER SKID	PER CRATE	WEIGHT
30" SILL	5 rows	8 units per row	40 units per skid	-	2088 lbs
20" SILL	-	-	-	40 units per crate	620 lbs



LORADO  
ICY GREY & CHARCOAL



Also see our  
Landscape *catalog*





Thanks to the Printreleaf certification program, Rinox has participated in the reforestation of the planet.

# Inspired by *nature*, art and what surrounds us.

Follow us \_\_\_\_\_



@RinoxInc



@rinoxinc



@rinoxincorporated



Rinox Inc



@rinoxgroup

Get inspired  
for your future  
project!





**DIVISIONS OF THE RINOX GROUP**

RINOX — Concrete products manufacturer  
RIALUX — Aluminum siding  
AZORIA — Inground fiberglass pools

**RINOX.COM**  
**RIALUX.COM**  
**AZORIA.CA**