

**PERMACON**

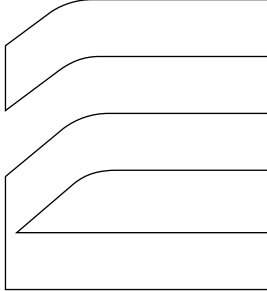
Stone and Brick

20  
24





Products with natural elegance built to withstand the test of time.



**Lexa Stone**  
Cameo Beige - P 28

**Cover:**  
**Lafitt Stone** Oasis installed with bagged mortar joint - P 22

# 16

- Stone**
- 18 Aria
  - 20 Dominion
  - 22 Lafitt
  - 24 Lafitt Alto
  - 26 Lamina
  - 28 Lexa
  - 30 Maestro
  - 32 Mondrian

# 34

- Brick**
- 36 Cardin
  - 38 Cinco Plus
  - 38 Cinco Plus Stone
  - 40 Melville Norman
  - 42 Melville Slik

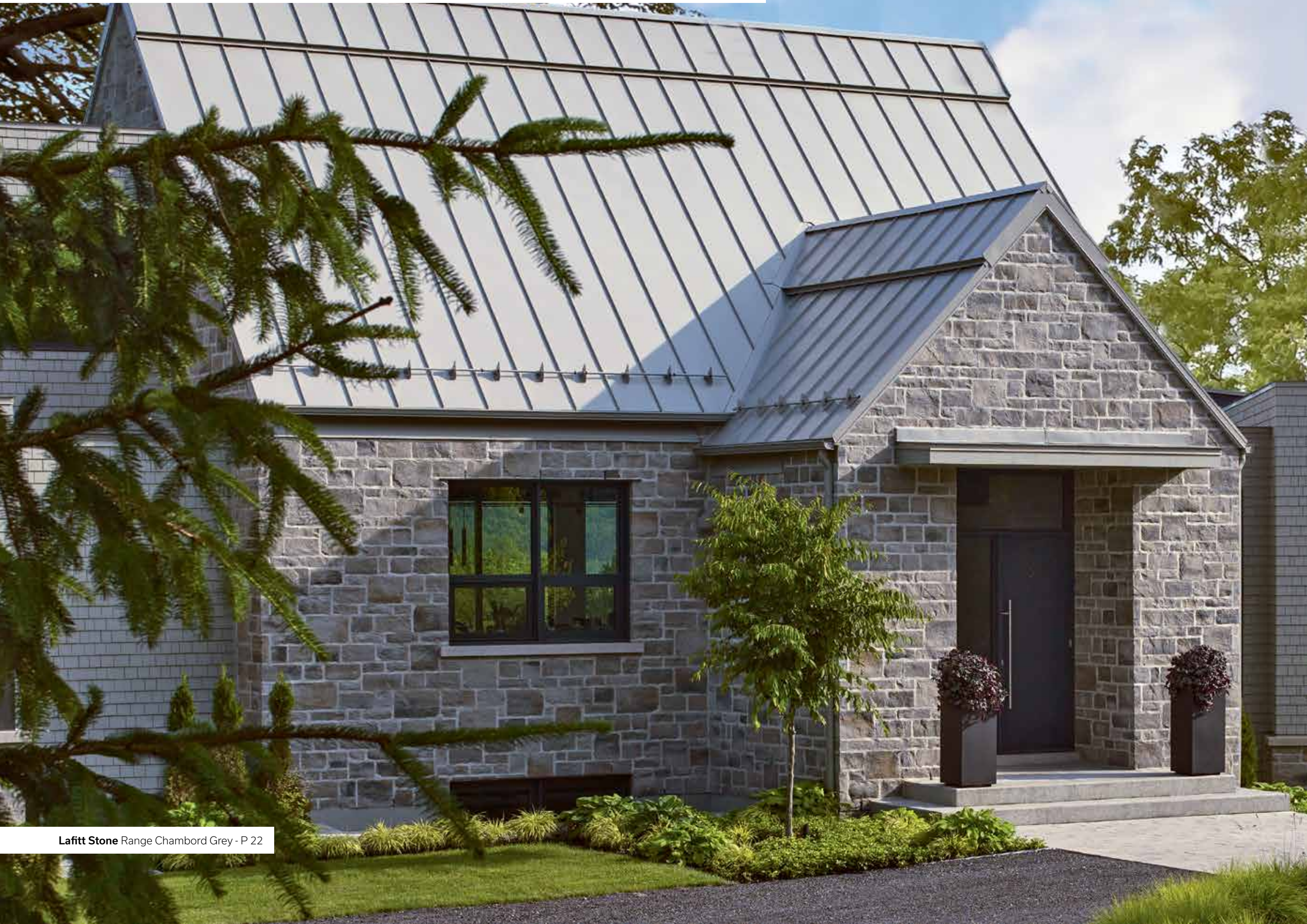
# 44

- Miscellaneous**
- 44 Accessories
  - 46 Tools
  - 50 Warranty

# Contents



Create the perfect look **for your dream home, stone by stone**



Lafitt Stone Range Chambord Grey - P 22



Lafitt Stone Range Chambord Grey - P 22

Where countryside serenity meets contemporary elegance.







Add a touch of glamour to your brick and stone facade with our Blizzard colour by pairing it with Mega Melville Pavers in Newport Grey for your driveway.

Create a symphony of textures and visual harmonies using contrasting stone, brick and paver colours.





Masonry materials that are both refined and robust create a beautiful façade.





# Nature and stone in perfect harmony

Mix and match our landscaping and masonry products with perfectly coordinated colours and textures that define your spaces.







Lafitt Stone in Range Scandina Grey compliments the driveway using Mega Melville pavers in the matching colour, creating a warm, distinctive exterior façade.





## Textures and Finishes

smooth



textured



In a palette of soft grey shades, bold dark greys and rich natural browns, our masonry products come in a variety of textures.

Textured finishes recall the authenticity of natural stone, while smooth finishes add chic modernity. **Let your exterior tell your story.**

Your dream exterior comes true with our masonry products. Stones and bricks with perfect finishes, available in a wide range of textures and colours, allow you to turn your aspirations into reality.





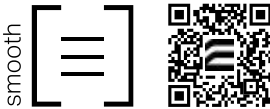
- 18 Aria
- 20 Dominion
- 22 Lafitt
- 24 Lafitt Alto
- 26 Lamina
- 28 Lexa
- 30 Maestro
- 32 Mondrian

# Stone





# Aria Stone



- Unit A** 90 x 60 mm x var. | 3 1/2 x 2 3/8 in. x var.
- Unit B** 90 x 102 mm x var. | 3 1/2 x 4 in. x var.
- Unit C\*** 90 x 172 mm x var. | 3 1/2 x 6 3/4 in. x var.

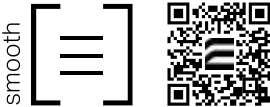
Units A, B and C are sold together and available for all colours.

\* Unit C is also sold separately and available in Blizzard, Heron and Rockland Black.





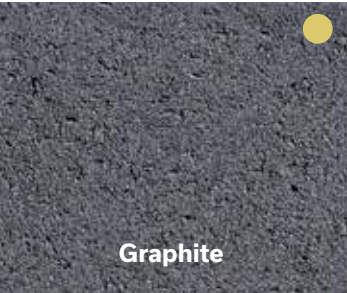
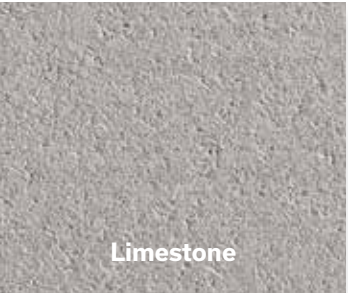
# Dominion Stone



↑ **Dominion Stone**  
Limestone

- Unit A** 90 x 190 x 390 mm | 3 1/2 x 7 1/2 x 15 3/8 in. (sold separately)
- Unit B** 90 x 190 x 590 mm | 3 1/2 x 7 1/2 x 23 1/4 in. (sold separately)
- Unit C** 90 x 290 x 590 mm | 3 1/2 x 11 7/16 x 23 1/4 in. (sold separately)

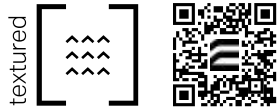
● Colours available for units  
B and C only







Lafitt  
Stone



Unit A	90 x 102 mm x var.		3 1/2 x 4 in. x var.
Unit B	90 x 178 mm x var.		3 1/2 x 7 in. x var.
Unit C*	90 x 292 mm x var.		3 1/2 x 11 1/2 in. x var.

\* Sold separately

← Lafitt Stone  
Range Scandina Grey





# Lafitt Alto Stone



Range Chambord Grey



Range Margaux Beige



Range Scandina Grey



Range Newport Grey



Rockland Black

<b>Unit A</b>	90 x 102 mm x var.		3 1/2 x 4 in. x var.
<b>Unit B</b>	90 x 178 mm x var.		3 1/2 x 7 in. x var.
<b>Unit C*</b>	90 x 292 mm x var.		3 1/2 x 11 1/2 in. x var.

\* Sold separately

← **Lafitt Alto Stone**  
Range Newport Grey with  
Rockland Black insertions





# Lamina Stone



↑ **Lamina Stone**  
Rockland Black  
**Melville Slik Brick**  
Range Scandinavia Grey

**Unit** 90 x 95 mm x var. | 3 1/2 x 3 3/4 in. x var.







# Lexa Stone

- Unit A** 90 x 76 mm x var. | 3 1/2 x 3 in. x var.
- Unit B** 90 x 114 mm x var. | 3 1/2 x 4 1/2 in. x var.
- Unit C\*** 90 x 198 mm x var. | 3 1/2 x 7 13/16 in. x var.

\* Sold separately



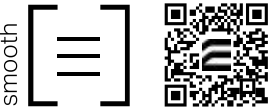
↑ **Lexa Stone**  
Cameo Beige







# Maestro Stone



↑ **Maestro Stone**  
Cameo Beige

**Unit**     90 x 90 x 890 mm | 3 1/2 x 3 1/2 x 35 in.







# Mondrian Stone



Blizzard



Range Amber Beige



Range Margaux Beige



Range Scandina Grey



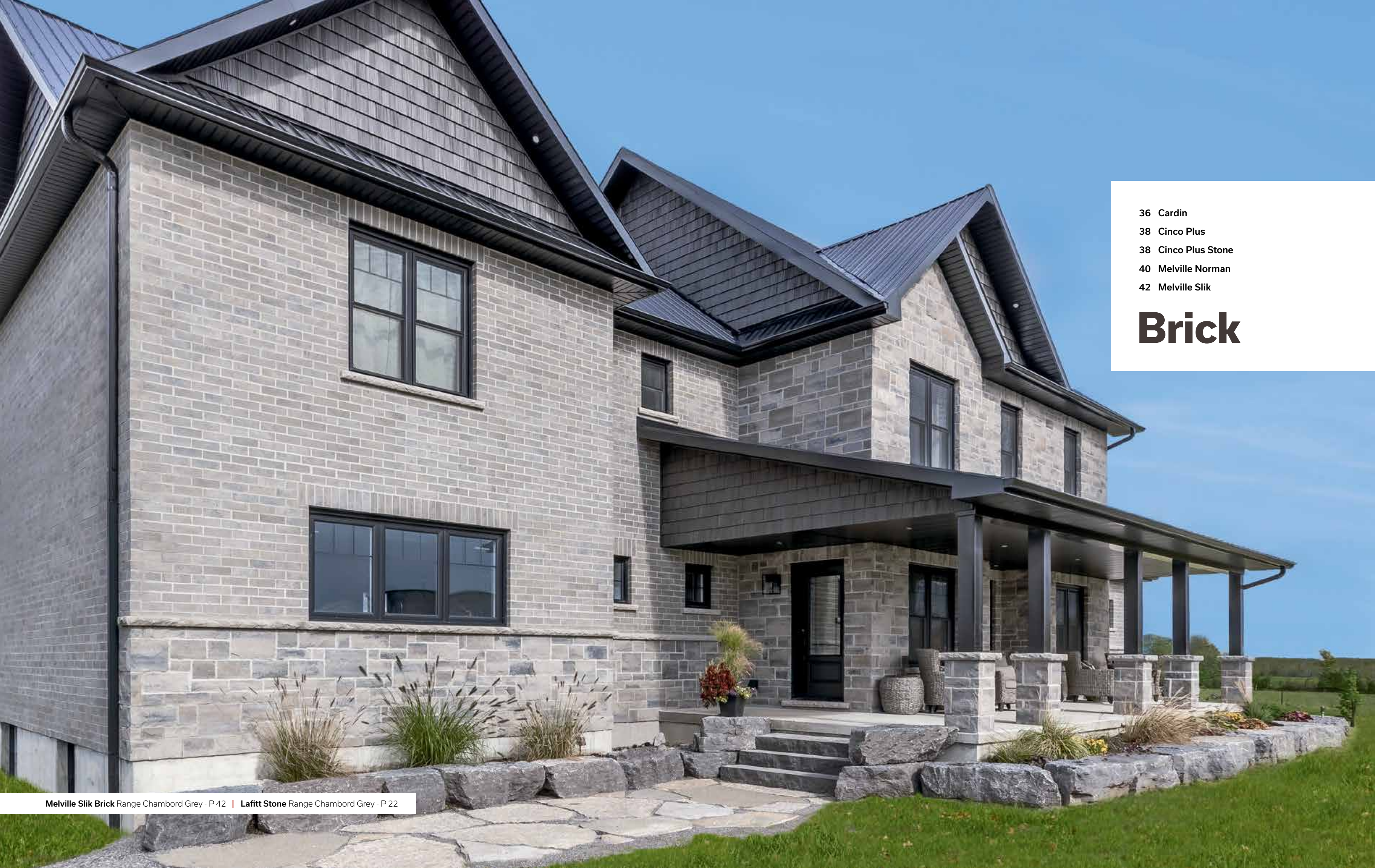
Range Newport Grey

- Unit A** 90 x 76 mm x var. | 3 1/2 x 3 in. x var.
- Unit B** 90 x 114 mm x var. | 3 1/2 x 4 1/2 in. x var.
- Unit C\*** 90 x 198 mm x var. | 3 1/2 x 7 13/16 in. x var.

\* Sold separately

← **Mondrian Stone**  
Range Scandina Grey





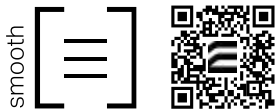
- 36 Cardin
- 38 Cinco Plus
- 38 Cinco Plus Stone
- 40 Melville Norman
- 42 Melville Slik

# Brick





# Cardin Brick



Arctic White



Blizzard

**Unit** 90 x 79 x 257 mm | 3 1/2 x 3 1/8 x 10 1/8 in.



← **Cardin Brick  
Blizzard**





# Cinco Plus Brick

**Unit**  
90 x 92 mm x var.  
3 1/2 x 3 5/8 in. x var.



Range **Margaux Beige**



Range **Lennox Grey**



Range **Scandina Grey**



Range **Chambord Grey**



Range **Grey and Black**



Range **Newport Grey**



**Rockland Black**

\* Range Grey and Black, Range Lennox Grey and Rockland Black are not available in the Greater Toronto Area

← **Cinco Plus Brick**  
Range Newport Grey



# Cinco Plus Stone

**Unit**  
90 x 196 mm x var.  
3 1/2 x 7 23/32 in. x var.



Range **Scandina Grey**



Range **Newport Grey**



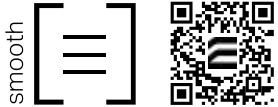
Range **Chambord Grey**

← **Cinco Plus Stone and Brick**  
Range Chambord Grey





Melville  
Norman  
Brick



Alpine Grey



Sterling Grey



Rockland Black

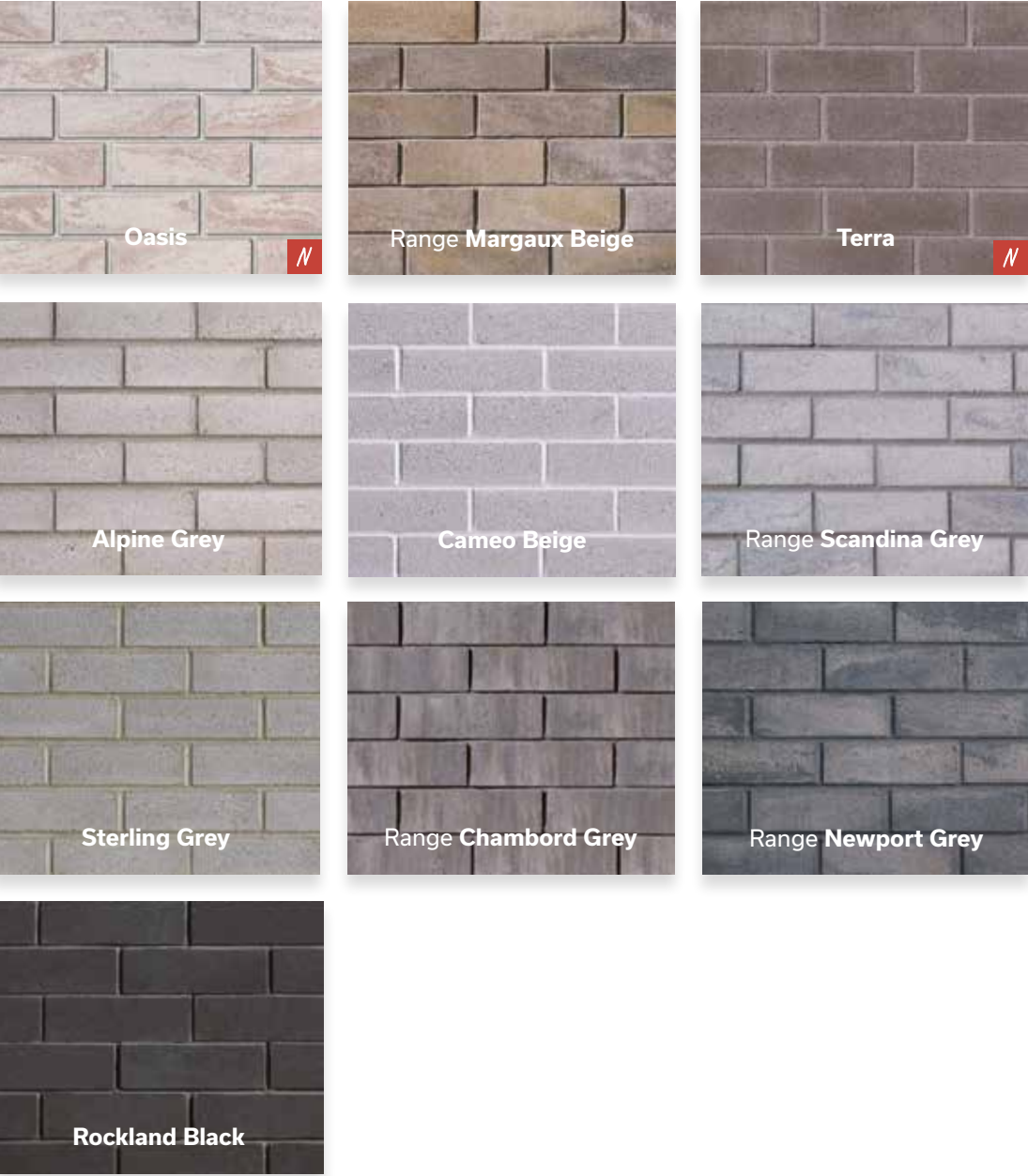
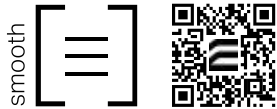
**Unit** 90 x 57 x 290 mm | 3 1/2 x 2 1/4 x 11 7/16 in.

← **Melville Norman Brick**  
Alpine Grey





# Melville Slik Brick



**Unit** 90 x 79 x 257 mm | 3 1/2 x 3 1/8 x 10 1/8 in.



**Melville Slik Brick**  
Rockland Black  
**Melville Norman Brick**  
Alpine Grey





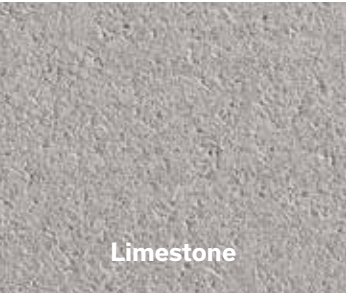
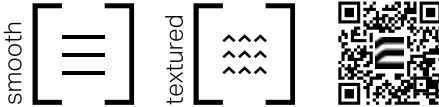
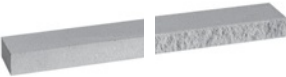
- 45 Reversible Dominion Window Sill
- 45 Cardiff Window Sills

# Accessories

Cardiff Window Sill - Chiselled Off-White - P 45 | Mondrian Stone Range Scandina Grey - P 32

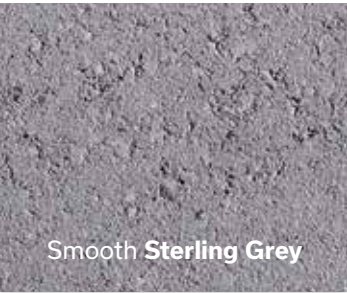
## Reversible Dominion Window Sill

Reversible Dominion Window Sill  
145 x 75 x 914 mm | 5 11/16 x 3 x 36 in.



## Cardiff Window Sills

Cardiff Window Sill - Smooth  
150 x 79 x 948 mm | 5 7/8 x 3 1/8 x 37 3/8 in.



Cardiff Window Sill - Chiselled  
150 x 79 x 948 mm | 5 7/8 x 3 1/8 x 37 3/8 in.





# A unique experience for professionals

Discover our dedicated **Pro Zone**. Check out our tools and resources, take advantage of our specialized training courses, and more. Turn your ideas into reality with Permacon!



### State-of-the-art tools

Access Permacon seamless textures and hatch patterns for use in your design software.

### Visual Resources

Explore our online directories of masonry hatch patterns and textures, making it easy to create visually rich, detailed designs.

PERMACON



MASONRY Seamless Texture Library

PERMACON



MASONRY Hatch Pattern Library



### The samples you need

Make sure you choose the right material for your project by ordering samples of our products for on-site evaluation.

### Lunch & Learn

We offer various seminars on our products featuring technical and design features, specification options, installation guidelines and our services to assist with successful project design.







Build masonry projects  
you never expected!

Permacon's  
masonry products:  
when sustainability  
meets aesthetics



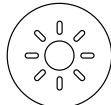
Sustainable Investment

- › Long-term investment
- › Energy savings
- › Property value increase



Trendy Styles

- › Unlimited customization
- › Multiple textures and styles
- › Wide range of colours



Maximum Comfort

- › Thermal comfort
- › Weather resistance
- › Acoustic insulation



Easy Maintenance

- › Quick, occasional maintenance
- › No fading
- › No decomposition



Visualization

Imagine your project with  
the visualization tool on  
[permacon.ca](https://permacon.ca)



More than  
70 years  
of expertise

Elevation

In its 9 manufacturing plants in Quebec and Ontario, Permacon manufactures increasingly innovative and trendy concrete products.

Engagement

Permacon is committed to offering high-quality products that exceed the expectations of its customers and partners.

Ecology

In its mission for a greener, more sustainable future, Permacon manufactures products locally, thereby reducing its carbon footprint. Our circularity strategy means that concrete excess from our manufacturing process is reused.



PERMACON  
A CRH COMPANY





# 50-Year Warranty

## Masonry Products



Permacon’s 50-year warranty applies to landscape and masonry products including Suretouch intended for residential use<sup>1</sup>. This warranty statement affirms that products manufactured by Permacon meet the requirements of CSA (Canadian Standard Association) and ASTM (American Society for Testing and Materials) standards.

*For details regarding commercial applications, please refer to our institutional, commercial and industrial warranty.*

Permacon guarantees that, as of the date of delivery, its concrete products are free from manufacturing defects. Provided that the conditions set forth below are met, Permacon guarantees the structural integrity of the concrete in its landscaping and masonry products for a period of 50 years from the date of the product’s purchase. The warranty applies to normal, non-abusive use of the product. To preserve the original appearance of your products, we recommend that you consult our **Landscape Maintenance Guide** available on our website.

IN ALL CASES DETAILED BELOW, THE WARRANTY IS LIMITED TO THE PRODUCTS’ MARKET VALUE.

### How do I make a claim?

 [permacon.ca/en/warranty/](https://permacon.ca/en/warranty/)



Proof of purchase is required to proceed with a claim request. No claims will be accepted without proof of purchase.<sup>2</sup>

All claims must be reported within 15 days of the discovery of a product’s defect. To validate a claim, a Permacon representative will arrive to inspect the defective products in order to confirm whether the claim is eligible. Therefore, it is essential to provide Permacon with the necessary access to inspect and take photos of the affected products.

This warranty is the only one that is presently offered. Because Permacon continually improves and modifies its products, it may alter and discontinue products at any time, and therefore may replace warranty-covered products with products of similar quality or offer monetary compensation if the products under warranty have been discontinued or are no longer on the market while the warranty is active.

In the event that a product is found to be non-compliant by Permacon or an authorized representative of the company, and in order to proceed with compensation, Permacon will take into account the number of months during which the

landscape or masonry products were in the possession of the owner or their contractor, up to the date of the claim, and will prorate the amount of the payment or replacement to be made accordingly.

For example, if the purchaser makes a warranty claim in the last month of the 10<sup>th</sup> year of the warranty (i.e., the 120<sup>th</sup> month), the manufacturer, at its sole discretion, shall either:

- Provide a replacement for the product in question if still available (only the defective product will be replaced);
- Return 480/600 of the price paid for the products to the owner. No labour, transportation, or other compensation will be covered by Permacon.

### Transferability

The warranty is transferable. Proof of warranty registration will still be required in the event of a claim. The prorated period will be based on the 50-year warranty period remaining as an assignee, if the purchaser transfers the warranty to a subsequent owner, as described above.

## 50-Year Warranty | **Masonry Products**



### Exclusions

A landscape or masonry product installed on an area of more than **100 square feet** confirms the acceptance of the product received on the job site and that no claim can be made to Permacon regarding the colour, size, or texture of the product.

This warranty excludes all products not supplied by Permacon, as well as any defects, failures, or damages that may result from the actions listed below:

- Contact with chemicals or cleaning products;
- Damage caused by pressure washers;
- Improper installation or other construction activities that do not comply with the installation standards established by ICPI, NCMA or IMQ, the National Building Code or the installation methods and tips recommended by Permacon. The installation guides provided by Permacon represent certain installation situations and are not exhaustive. It is therefore strongly recommended that you consult a qualified professional to ensure the proper installation of Permacon products on a specific job site;
- Defective design or construction resulting in sagging, shifting, or failure;
- Breakage due to shock, impact, or excessive load during handling, use, or transportation;
- Natural disaster or other uncontrollable event;
- Breakage and damage to products caused by soil movement or building movement as well as misuse of construction, compaction, or snow removal equipment. The warranty does not cover surface deterioration caused by the misuse of sodium chloride (NaCl) to de-ice pavers, slabs, or steps;
- The use of sodium chloride (NaCl) on the following products:
  - Step Valentia;
  - Valentia Block;
- Be.OnStone and Mirage products sold by Permacon.

### Installation

When installing masonry products, all work must be cleaned to remove any residues and contaminants left on the stone or brick. Permacon accepts no responsibility for stains and colour changes caused by installation residue or the consequences of cleaning these residues.

### Colour

**The presence of natural ingredients used in the manufacturing process varies from one product to another. Therefore, the product received on the job site will not be completely identical to the products displayed in our commercial presentations (catalogs, samples, displays). Any difference in colour will not be covered by the guarantee.**

Photos of our products in landscape and masonry brochures, as well as in displays such as masonry panels and landscape racks at our distributors, are not an exact representation of the products that will be delivered to the job site. Permacon offers a variety of products with different colours to reproduce the appearance of natural stone. It is therefore strongly recommended that you view several products directly from your authorized Permacon distributor to see all available colours.

**It is the purchaser’s responsibility to approve the products (and their colour) delivered to the job site prior to installation to confirm satisfaction. It is also recommended to mix products from different pallets received on the job site. Since variations in colour shades are a natural phenomenon, Permacon does not guarantee colour uniformity between different pallets on the same job site. Product installation constitutes acceptance.**

### Polymeric film

A whitish polymeric film can be found on the surface of Permacon’s products. This is the result of an inadequate use of polymeric sand. Improper cleaning of slabs and pavers prior to the application of water on the product surface can cause this whitish polymeric film. This film does not affect the structural integrity of the product. Permacon cannot be held responsible for this phenomenon, which is not covered by the warranty.

### Efflorescence

White traces on the surface of the product are caused by a natural phenomenon called efflorescence. More visible on darker products, efflorescence affects neither the intrinsic technical qualities nor the structural integrity of Permacon’s products. The possible appearance of efflorescence cannot be the subject of any guarantee. In most cases, efflorescence disappears by itself over time.

<sup>1</sup> The following locations are defined as residential: family dwelling of five units or less, single family homes, garden suites, or townhouses.  
<sup>2</sup> The following documents are considered valid proof of purchase: invoices directly from an authorized Permacon distributor, or invoice from a landscape contractor, general contractor, mason, or home builder.





Since 1952, all Permacon products have been made with passion and pride in Canada.



[permacon.ca](https://permacon.ca)



1 888 PERMACON

**PERMACON**  
A CRH COMPANY